

Cultural Competency: How Adult Perspective Shapes Student Experience

Brittany Sandbergen,
US Sailing Project Consultant

#Goals

1. Begin to recognize and accept personal bias as a means to improve instruction for all participants.
1. Identify opportunities to challenge yourself as an educator to create more inclusive environments for young people.

Agenda Overview

- Goals and Introductions
- Adults: Making It Safe
- Identity Mapping
- Partner Chats
- Bringing it back: why does this matter?

Building Community:

“No significant learning can occur without a significant relationship.”

-James Comer



Equity & Equality: What's the Difference?

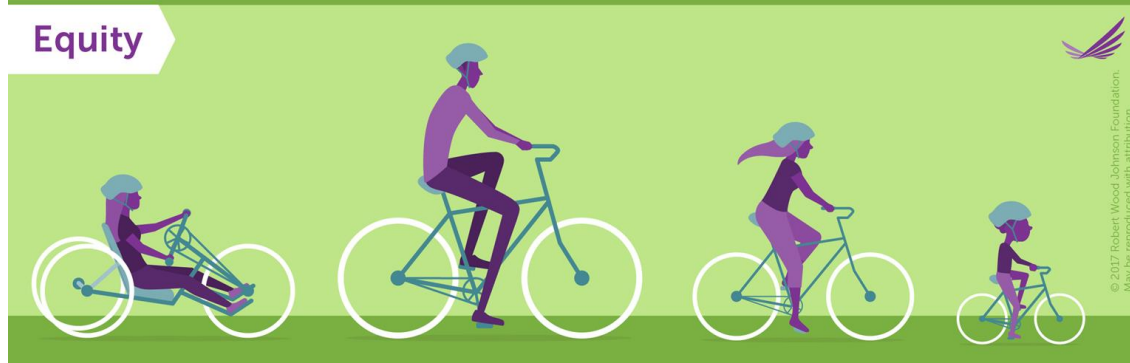
“Sameness” Giving everyone the same thing; this only works if everyone is starting from the same place.

Equality



“Fairness” Access to the same opportunities with acknowledgment of differences; We need equity to achieve equality!

Equity



© 2017 Robert Wood Johnson Foundation.
May be reproduced with attribution.

Creating Safe Spaces

Building Community

Make It Relevant!

Recognizing Youth as Individuals

Caring Adults

No Conclusion Jumping!

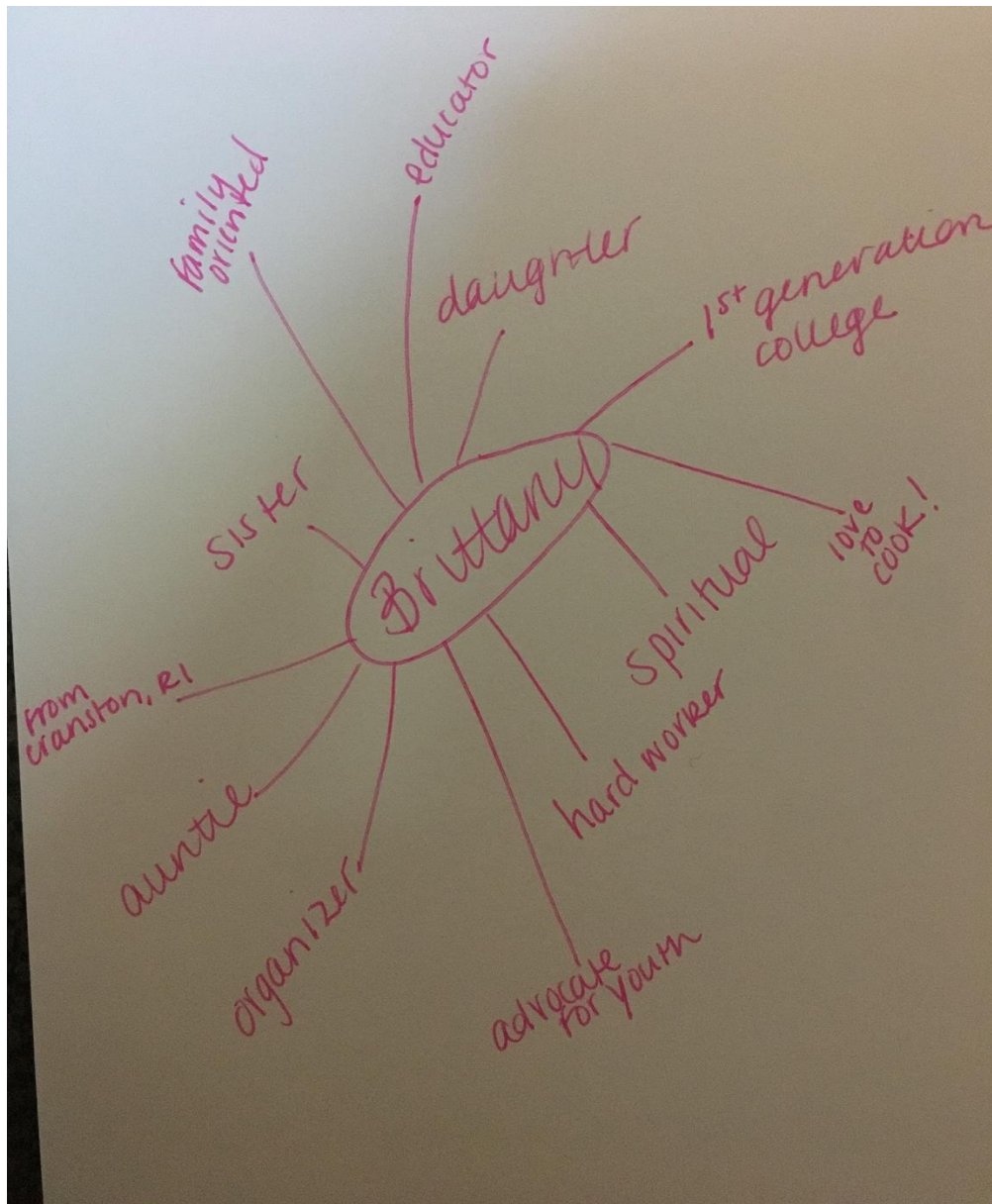
Active Listening

Emotional/Psychological Safety

Positive Language & Interactions

What gets in the way of this?

ADULTS!



In order to best support young people, we must acknowledge our strengths and challenges as adults.

Which trait most identifies you?



Person 1:

**1 minute to speak,
uninterrupted.**

Person 2:

**Listens without
responding.**

**Take 2 minutes to
continue discussion.**

Which trait do other people identify about you?



Person 1:

1 minute to speak, uninterrupted.

Person 2:

Listens without responding.

Take 2 minutes to continue discussion.

Share a moment where you saw inequity, but didn't act.



Person 1:

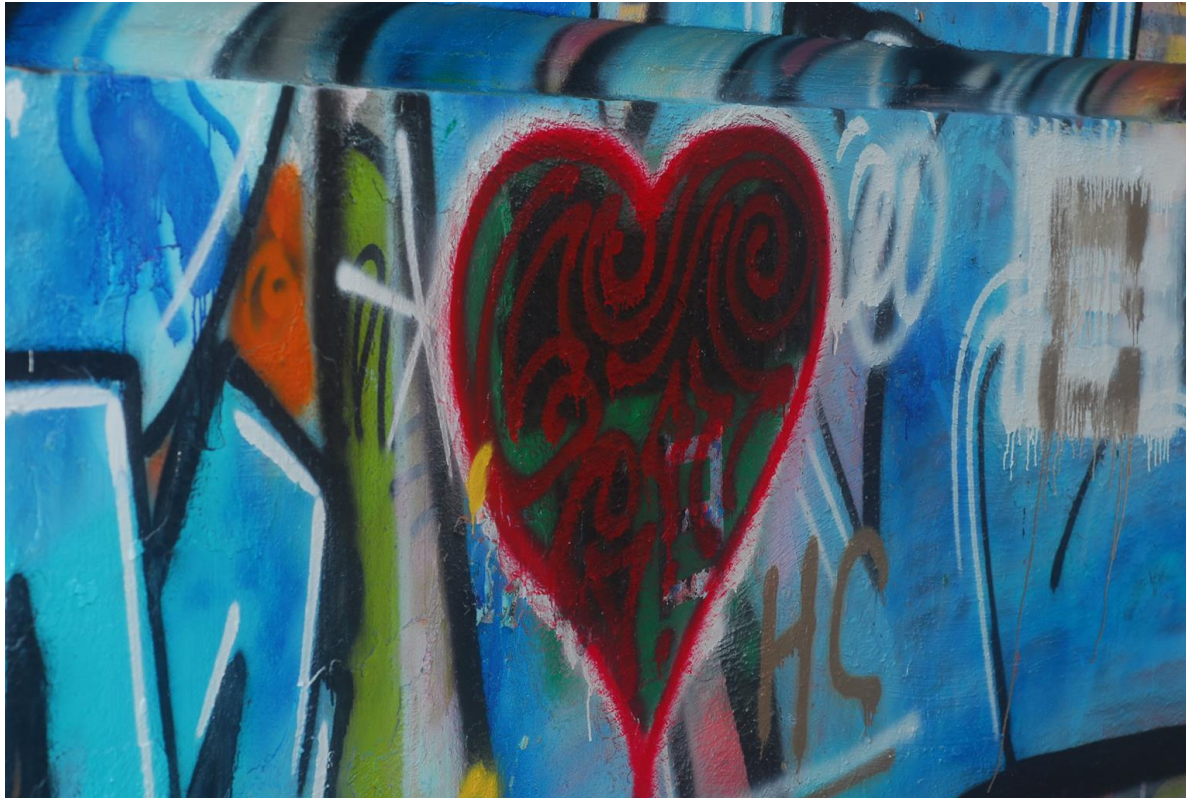
**1 minute to speak,
uninterrupted.**

Person 2:

**Listens without
responding.**

**Take 2 minutes to
continue discussion.**

Share a moment where you saw inequity and did act.



Person 1:

**1 minute to speak,
uninterrupted.**

Person 2:

**Listens without
responding.**

**Take 2 minutes to
continue discussion.**

Take a moment

What was hard about this exercise?

Did you struggle to identify any of the information that was asked of you?

Can you process why this is a challenge?

Additional Questions or Thoughts? Let me know!

Brittany Sandbergen

bsandbergen@gmail.com

401-439-8741

Resources

<https://www.safeatschool.ca/plm/equity-and-inclusion/strategies-for-positive-action/fostering-equity>

<https://www.brown.edu/academics/education-alliance/teaching-diverse-learners/>

<http://www.cypq.org/>

<https://www.edutopia.org/blog/equity-vs-equality-shane-safir>

<https://nationalseedproject.org/about-us/white-privilege>

Your Opinion Matters

Please open the **Sailing Leadership Forum app** and complete the **session survey** found in the **menu bar** for a chance to win a **free drink ticket!**

Thank you for attending this session