

Technology for Race Organizers Race Committees and Competitors

Highlight Technology

- Event Management (OA)
- Race Management
- Competitor
- Spectator and General Public

Event Management

- Entry
- Communications
 - Social Media
- Merchandizing
- Marketing, Media and Sponsor Fulfillment



Welcome to Yacht Scoring

Yacht Scoring is a featured packed 100% web based yacht racing management and scoring system that simplifies the task of competitor registration, event management, competitor and media communications while providing results in near-real time to competitors and the World following your event on the internet. With **Yacht Scoring** your event can be up and running with a complete event web site in 5 minutes!

Yacht Scoring, works 100% over the internet with a single database for all of your event information eliminating the need to keep the entry list in one program (or more), transferring entries into a scoring program, scoring and then having to upload the results to the internet and the media. **Yacht Scoring** also provides you with a single central data source that everyone in your Race Committee, using individually setup passwords, can access to manage the event from just about anywhere - home, office, club, etc.

And most important for you... No Advertizing! Only your sponsor's logos which you get to post and link!

Yacht Scoring Capabilities and Functionalities:

Prior to event:

- Online Event registration
- Multiple event registration with one time data entry
- Competitor login & entry maintenance
- Complete Crew List Information
- Crew Waiver online signing
- Competitor Crew email communication
- ISAF Classification and USSailing Membership Reports
- Event registration maintenance
- Event logo Upload (brand the event pages with your race logo)
- Event sponsor's logo upload and add web links
- Event documents upload and automated linking
- Required document tracking and reporting
- One-click email competitor notification of missing documents
- Manage all communication with competitors and event subscribers
- Course/Division/Class splits setup
- Generate Scratch Sheets, Event Roster, RC Work Sheets
- Crew / Boat sign-up board
- And more...

During the event:

- Post race updates directly to the web site
- Email race news to competitors and subscribers
- Enter finish times and generate results directly on the Internet (results available immediately!)
- Real time "Current Standing" Results (Race and Cumulative)



Award Winning Events USSailing OD Regatta of the Year

[2011 Heineken High Performance One Design Regatta](#)

[2012 Bayview Yacht Club One Design Regatta](#)

[2013 Charleston Race Week](#)



www.yachtscoring.com/mobile



Current Events...



KEY WEST CUBA RACE WEEK
[2016 Conch Republic Cup](#)

January 27 - February 6, 2016



[2016 Grenada Sailing Week](#)

28 Jan - 02 Feb, 2016



[2016 Mid-Summer Fling Regatta](#)

29 - 31 January 2016



[2016 South Points 6](#)

January 30, 2016



[2015/2016 Melges 20 Miami Winter Series :: Event 2](#)

**Yacht Scoring Event Administration
2015 Melges 32 U.S. National Championship
December 4-6, 2015**

- [General System Instructions](#)
- [Quick Guide](#)
- [YS Scoring Guide - Detailed step-by-step!](#)
- [Yacht Scoring Software Updates](#)

- [Edit Event Information](#)
- [Edit Registration Email Message](#)

- [Upload/Update Event Documents](#)
- [Required Docs, Ratings, Options, etc](#)

- [Setup Event Specific Questions](#)
- [Event Specific Questions Report](#)

- [PHRF ToT Conversion Factors](#)

- [Add Yacht to this event](#)
- [Edit/Delete Yacht Entries](#)

- [View Ratings and Entry Comments](#)

- [Setup Team Scoring](#)

- [Crew List Report](#)
- [Crew List Waiver Report](#)
- [Crew List Emergency Report](#)
- [Crew List Safety Course Report](#)
- [Add Crew Member](#)
- [Edit/Delete Crew Member](#)

- [Setup/Edit Course/Division/Classes](#)

- [Quick Change Class Splits](#)
- [Assign Bow Numbers](#)
- [Setup Scoring Parameters \(Race Drops\)](#)

- [Setup Race & Starting Time](#)

- [U.S. National Championship](#)

- [Edit Starting Times / Course Length](#)

- [Enter Finish Times](#)

- [Protest, Penalties, Manual Changes](#)

Protest Reports:

- [Enter RC Docking Times](#)

- [Enter/File a Protest](#)
- [Protest List/Update](#)
- [Protest Report](#) - Print/Post

- [Event Roster](#) - 11 entries (plus 0 inactive)
- [Scratch Sheet](#)

- [RC Worksheets/Reports/Scratch/Results](#)
- [RC Work Forms \(in PDF format\)](#)

- [Boats Information](#)
- [Competitor's Information](#)
- [All Entry Information](#)

- [Entry Summary Report](#)
- [Competitor Payments/Purchases](#)
- [Public Payments/Purchases](#)

- [Event Budget & Finance Report](#)

- [Print - Individual Entry](#)
- [Print - Skipper's Bag \(by Boat\)](#)
- [Print - Skipper's Bag \(by Class\)](#)
- [Print - QR Codes](#)

- [Cumulative Results](#)

Result Detail

- [Race 1](#)
- [Race 2](#)
- [Race 3](#)
- [Race 4](#)
- [Race 5](#)
- [Race 6](#)
- [Race 7](#)
- [Race 8](#)

Finish Order Report

- [Race 1](#)
- [Race 2](#)
- [Race 3](#)
- [Race 4](#)
- [Race 5](#)
- [Race 6](#)
- [Race 7](#)
- [Race 8](#)

- [Daily Awards Report](#)

- [Daily Trophy Signup Sheet](#)

- [Final Trophy Signup Sheet: \[Top 3\]\(#\) / \[Top 5\]\(#\)](#)

- [Results & Scratch Sheets](#) are **Final**
Change to [Preliminary](#)

- [Crew/Boat Board](#)

- [Promote your event through Sail-World!](#)



- [Race Blog and Quick News](#) -
Quick news during the race

- [ADD Race News and Releases](#)
(8 Email News Subscribers)

- [Media List Sign-ups](#)

- [Sponsors Logo - Add / Delete](#)

- [Additional Event Links - Add / Delete](#)

- [Send Email to Competitors](#)
(Email, News, Notice Board, All Communications)

- [Text Message Competitors](#)
(5 Cell Phones for TXT)

- [Race News, RC Announce, Notice Board - **Edit / Delete**](#)

- [Race Committee & Volunteer Management](#)
- [Race Committee & Volunteer Report](#)
- [Email RC & Volunteers](#)

- [View Entry Fee & Setup Information](#)
- [View Event Documents](#)
- [Paypal Payment Report](#)

- [View Sail Declarations](#)

- [User Management](#)

- [Change Event Management](#)

- Any questions? [Contact us](#)



Direct links to your event pages in Yacht Scoring:

Main Menu:	http://www.yachtscoring.com/emenu.cfm?eID=1509
Registration:	http://www.yachtscoring.com/event_registration_email.cfm?eID=1509
Entry List:	http://www.yachtscoring.com/current_event_entries.cfm?eID=1509
Crew List Report:	http://www.yachtscoring.com/crew_list_report.cfm?eID=1509
Scratch Sheet:	http://www.yachtscoring.com/event_scratch_sheet.cfm?eID=1509
Cumulative Results:	http://www.yachtscoring.com/event_results_cumulative.cfm?eID=1509
Sail Declaration:	http://www.yachtscoring.com/sail_declaration_rpt.cfm?eID=1509
Document's page:	http://www.yachtscoring.com/event_documents.cfm?eid=1509
Notice Board:	http://www.yachtscoring.com/notice_board.cfm?eid=1509
Crew/Boat Board:	http://www.yachtscoring.com/event_board.cfm?eid=1509
Race Blog:	http://www.yachtscoring.com/race_blog.cfm?eid=1509
Protest/Dock Time:	http://www.yachtscoring.com/event_protests.cfm?eid=1509

Add any of these links to your club or regatta web site to link directly to your event pages at Yacht Scoring



**Score:
IRC
One Design
ORC
ORR
PHRF
Portsmouth
Online.**



US SAILING Regatta Network makes it easy to create, manage, communicate and market your sailing event online. Since 2006 over 900 clubs have used Regatta Network to process over 300,000 registrations for almost 9,000 sailing events - regattas, camps, classes, seminars and banquets

[CLICK HERE to attend one of our "Brown Bag" Demo Sessions.](#)

Fast

The 100% web based system makes it easy create, manage, and update your event. Your event can be online and accepting registrations within minutes -- complete with a stand alone event site, online store, payment processing, entrant lists, and more!

Flexible

The Regatta Network system was designed by sailors for sailors. As such, it has been used for camps, classes, meetings, banquets, seminars, and regattas including match races, fleet races, pursuit races, distance races, one design regattas, junior regattas, team races, and more.

Affordable

There is NO software to buy, NO set-up fee, NO hosting fees, NO credit card fees, NO merchant account fees. Just a simple low percentage of registrations and meals or merchandise orders processed through the system.

Regatta Tech

...the way forward in Online Regatta Management

Online Regatta Registration, Payment and Scoring

RegattaTech is an online service that provides an easy to use system for regatta management. It can be used from anywhere on any internet connected computer, tablet or phone - Windows, Mac, Linux, Droid, iPad/iPhone, and more. There is nothing to download or install. Your entry forms, competitor lists, scoring and results are available anywhere, any time. There is no need for importing, exporting, uploading or downloading into various formats, tools or platforms. **RegattaTech** handles it all seamlessly.

We handle events ranging from local club races to high profile world championship regattas. We can do all the setup for you from your event's NOR or existing forms.



Features Include:

Customizable entry forms to fit your event's exact needs and gather the information you need about your competitors.

Email entry confirmations for entrant and event management team.

Online competitor list with password protected administration for editing entrant information and making division and fleet assignments.

Integrated point and click online scoring for one design or handicap (PHRF ToT/ToD, Portsmouth, and more).

Real time online regatta scoring and race results - from the clubhouse or committee boat.

Facebook and Twitter integration. Broadcast results to friends and followers.

Support for online sale of regatta merchandise or social events tickets - with entry or merchandise only.

Secure online entry fee payment. No merchant or PayPal account needed.

Let us get your event up and running now! Get started by contacting us or sending your Notice of Race to info@regattatech.com!



Regatta Toolbox



Sailing is tricky. Hosting a regatta shouldn't be.

[learn more](#)



all classes

Open

Junior Skipper

All Girl

all statuses

needs band

ashore

sailing



Regatta Toolbox

	Sail Number	Wristbands	Sailor(s)	Club/Spd	
1	 AUS 1401	ashore	Aimee Gallaway Chelsea Williams	B16FTSC	
2	 AUS 1374	sailing	Alex Watson liam watson	rqys	
3	 AUS 1391	ashore	Alistair Read Liam Rodgers	ASC Bolt	paid
4	 AUS 1201	sailing	Amelia Quinlan Belle Parker	HHSC	paid
5	 AUS 1357	sailing	Amy Bentley Jake Bentley	Manly 16SSC	paid
6	 AUS 1304	ashore	Anneliese Scholten Chloe Briscoe	Avalon Sailing Club	paid
7	 AUS 1272	ashore	Bethany Sherry Josh Gesell	Belmont 16ft Sailing Club	paid
8	 AUS 1372	sailing	Breiana Whitehead Sophia Prince	Townsville Yacht Club	paid
9	 AUS 1254	ashore	Brendan Crisp Daniel Maree	RYCT	paid
10	 AUS 1375	ashore	Caitlin Jeffries Matthew Quinlan	Hunters Hill Sailing Club	paid
11	 AUS 1344	ashore	Connor Weare Riley Curry	PKSC	refunded
12	 AUS 1324	ashore	Courtney Smith Lilli Philpott	belmont 16ft	paid

X

add a band

AUS 1372 already has at least one wristband assigned. Assign another by scanning or typing the ID below.

add new band



Regatta Toolbox

update status

Updates occur automatically as sailors sign in and out. AUS 1372's current status is 'sailing.' Want to set them to 'ashore'?

set to 'ashore'

tracking history

9.1.2016 (15:54)

assigned 1st
wristband

9.1.2016 (15:54)

came ashore

9.1.2016 (17:17)

went sailing

9.1.

ca

iPad 2:24 PM 47% regattatoolbox.com

regatta toolbox

← Tasar - Race 2

unscored

predictive

AUS 2763

+

AUS 2953

+

AUS 761

+

AUS 1882

+

AUS 2300

+

scored

re-sort


AUS 2944	1	AUS 2107	2	AUS 2939	3	AUS 1771	4
AUS 2898	5	-	6	-	7	-	8
-	9	-	10	-	11		

letter scores

AUS 2903

OCS (12 pts)

publish scores



Regatta Toolbox

iPad 2:20 PM 47% regattatoolbox.com

regatta toolbox

Viper

provisional

Race 1

Race 2

add race

0 race drop(s)

Tasar

official

Race 1

Race 2

add race

1 race drop(s)

Sabot

official

Race 1

Race 2

add race

0 race drop(s)

RSX

provisional

Race 1

Race 2

add race

0 race drop(s)

Optimist Green

provisional

add race

0 race drop(s)

Optimist

provisional

add race

0 race drop(s)

Laser Radial

provisional

add race

Laser 4.7

provisional

add race

Laser

provisional

Race 1


Race 2

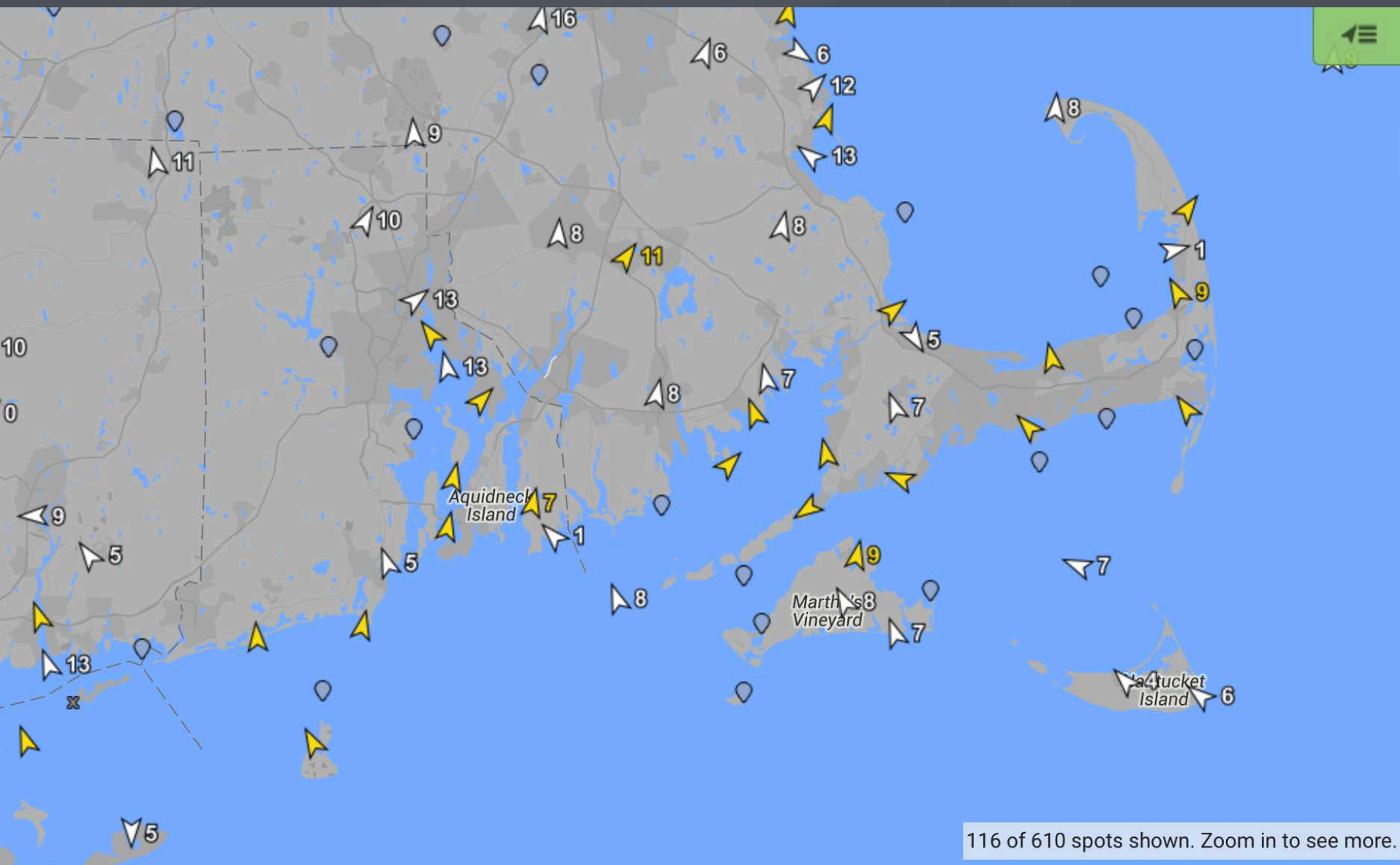
Race Management

- Entry
- **Weather**
- Course management
 - Virtual Mark
- Tracking
- Scoring



Weather Where You Sail.

 Use Your Location



Beavertail

[All Details](#)
[Alert](#)
[Widgets](#)
[Map](#)

Quicklook/Plus Forecast

WRAMS 2km - Chesapeake (Premium - Upgrade required)

NAM 12km

✓ GFS 0.5 Deg

NAM 5km

CMC 0.6 Deg

WW3 Atlantic

RUWRF 3km - North East

HRRR 3km

WRF 5km

Ensemble

(mph)

Gust

Sky

°F

Precip

Cloud(%)

Pres(MB)

Run

Onsite

Tides

Archives

Statistics

Info

7 Day

Basic

Detailed



ri, 29 Jan

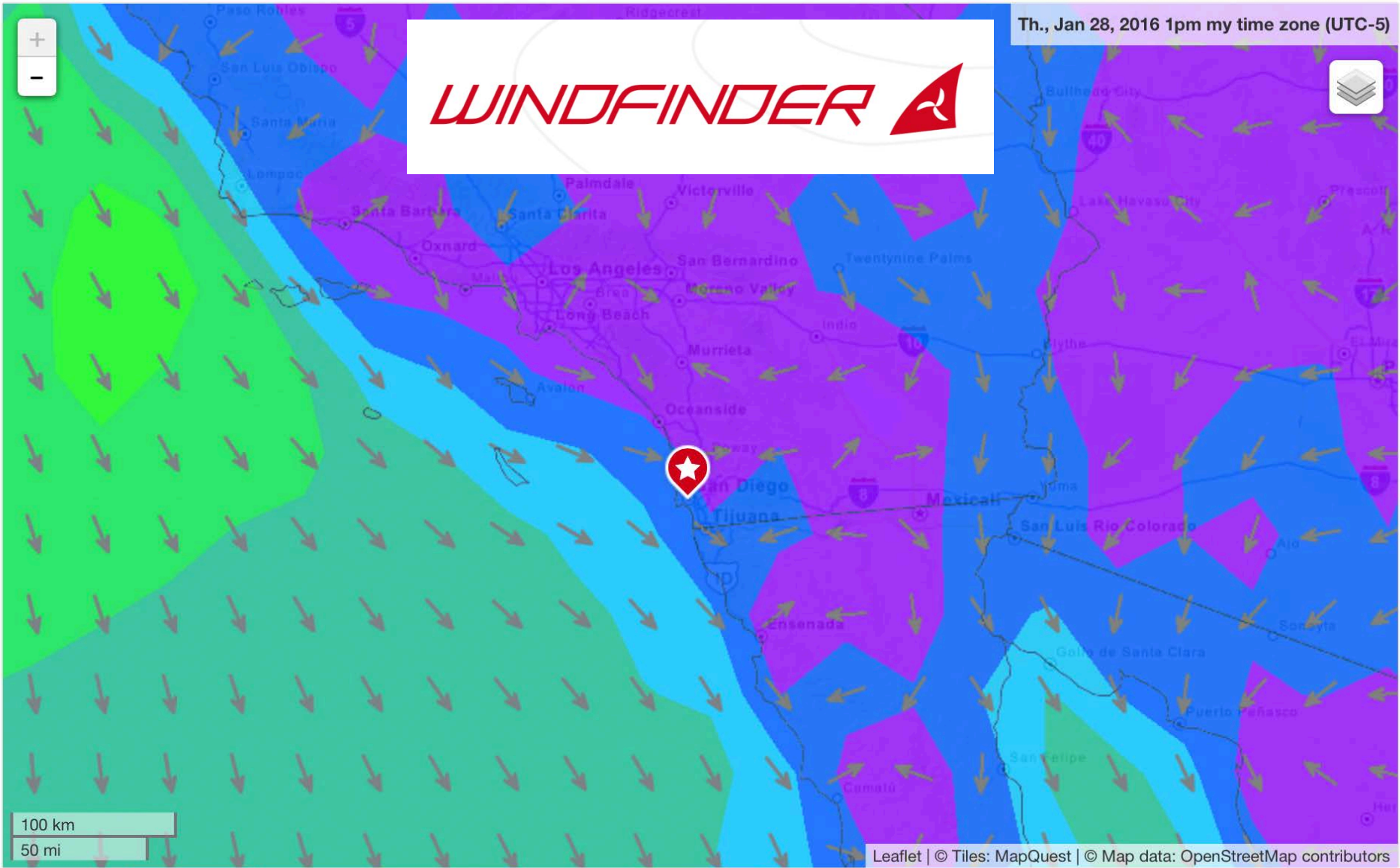
Sat, 30 Jan

12AM	1PM	4PM	7PM	10PM	1AM	4AM	7AM	10AM	1PM	4PM	7PM	10PM	1AM
4	11	12	19	21	20	18	14	11	13	18	22	20	17
5	14	20	32	37	35	31	25	15	16	27	35	33	28
38	38	37	35	33	33	32	31	34	37	37	36	35	35
9	12	1	7	6	3	0	0	0	0	0	0	0	0
995	993	994	997	1001	1005	1009	1013	1015	1014	1014	1015	1016	1016
12z	12z	12z	12z	12z	12z	12z	12z	12z	12z	12z	12z	12z	12z



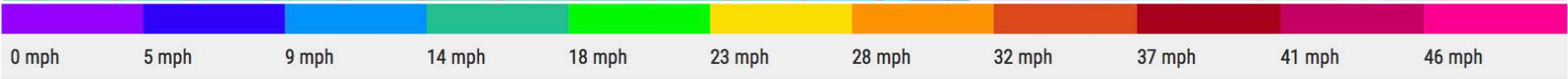


Th., Jan 28, 2016 1pm my time zone (UTC-5)



100 km
50 mi

Leaflet | © Tiles: MapQuest | © Map data: OpenStreetMap contributors



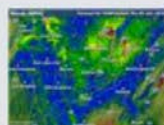
Th., Jan 28, 2016 1pm



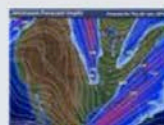
Wind Maps



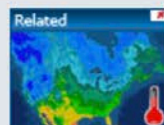
Current Winds



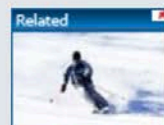
WINDcast



Jet Stream



Temperatures



Ski & Snow



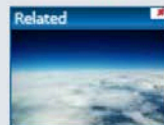
Local Weather



Interactive Weather



Current Radar



Satellite Weather



Storm Tracking

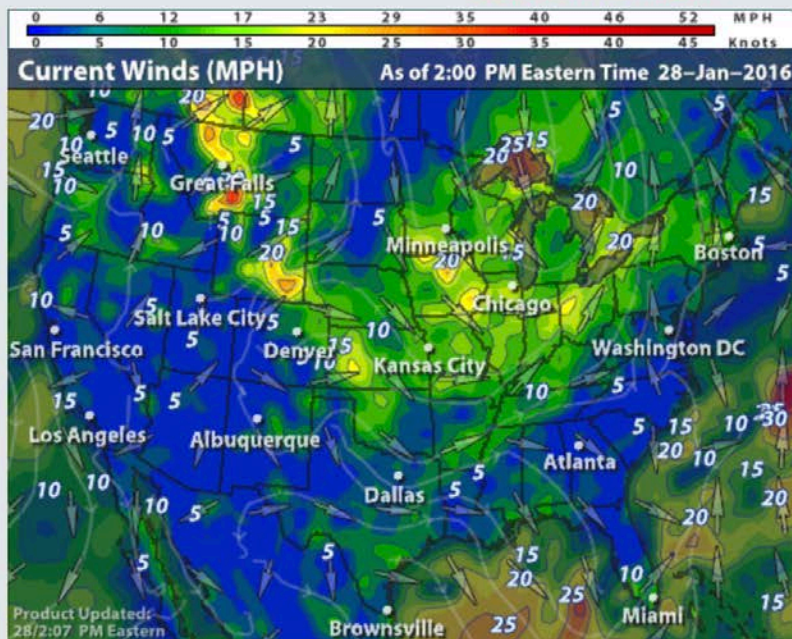
Current Winds

Region:

Pan & Zoom

Toggle National and Regional Views

Click the blue-button above to toggle between National/World and Regional views. View persists until toggle back.
For adding explicit book-marks to directly access preferred weather maps, [click here to visit our FAQ page](#).





1mph
South-Southeast

68°F

No severe weather warnings active

Report from local weather station at 11:52 AM local time.



6:45 AM



5:17 PM



11:58 AM (UTC -8)



3 ft



Forecast



Superforecast



Report



Wind statistics



Tides

Last update: 11:38 am local time



Print this forecast



Embed this forecast

Local date

Thursday, Jan 28

Friday, Jan 29

Local time

Wind direction

Wind speed (mph)

Wind gusts (max mph)

Cloud cover

Precipitation type

Precipitation (in/3h)

Air temperature (°F)

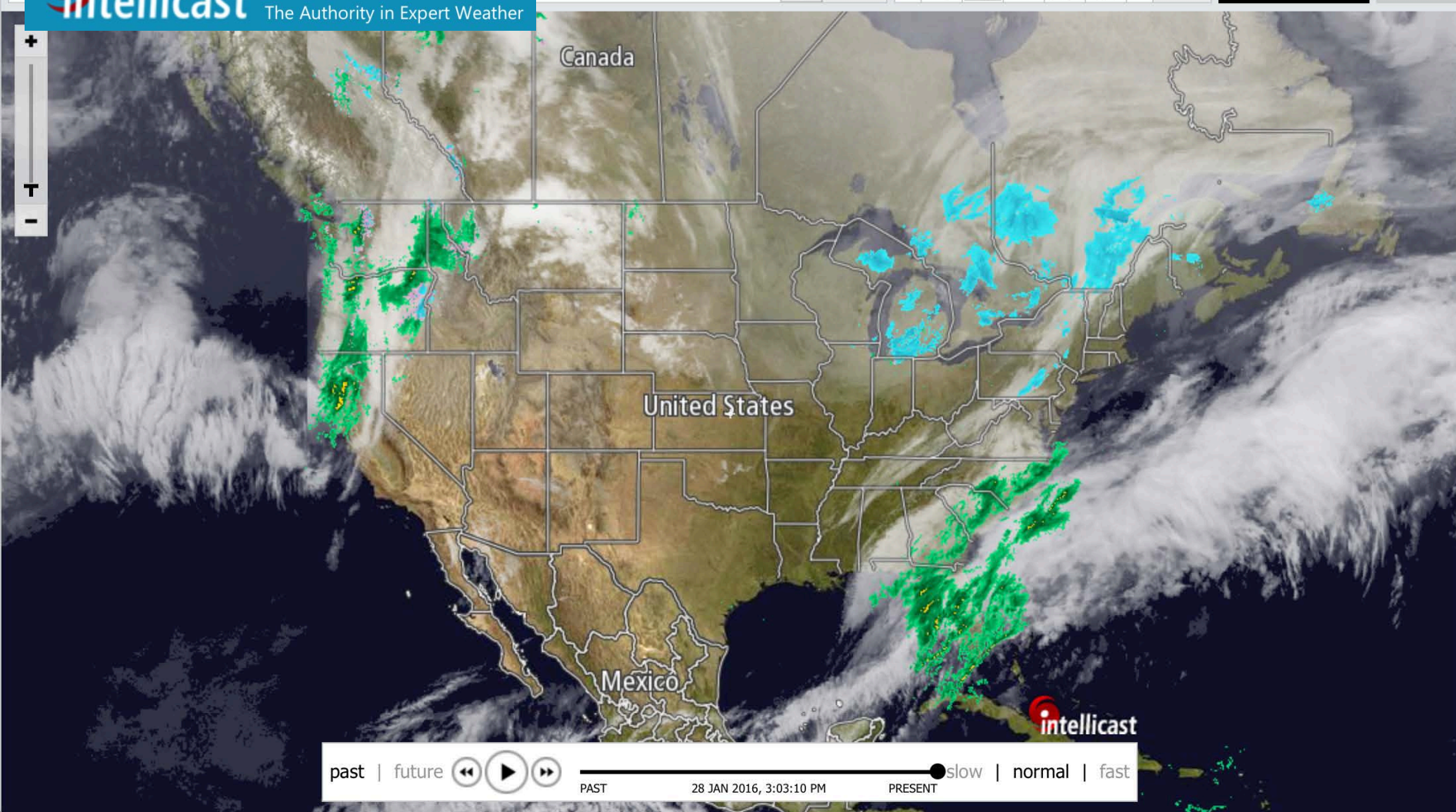
Air pressure (hPa)

Wave direction

Wave height (ft)

Wave period (s)

	1am	4am	7am	10am	1pm	4pm	7pm	10pm	1am	4am	7am	10am	1pm	4pm	7pm	10pm
Wind direction	↖	↖	↖	↗	↗	↗	↖	↖	↖	↖	↖	↗	↗	↗	↗	↖
Wind speed (mph)	7	7	3	7	12	5	13	6	5	3	6	2	7	6	3	2
Wind gusts (max mph)	9	8	5	8	12	6	16	6	7	5	7	2	8	6	3	3
Cloud cover	☁	☁	☁	☁	☀	☀	🌙	🌙	🌙	🌙☁	☀	☀☁	☁	☀☁	🌙	🌙
Precipitation type																
Precipitation (in/3h)																
Air temperature (°F)	59	59	57	62	62	62	59	59	59	59	59	64	66	64	60	59
Air pressure (hPa)	1022	1022	1021	1021	1020	1018	1020	1019	1019	1018	1018	1018	1017	1016	1017	1017
Wave direction	↗	↗	↗	↗	↗	↗	↗	↗	↗	↗	↗	↗	↗	↗	↗	↗
Wave height (ft)	5.6	5.6	5.6	5.6	5.6	5.6	5.9	5.9	6.2	6.9	7.5	7.9	8.2	8.2	8.2	8.2
Wave period (s)	16	16	16	15	15	16	16	16	16	15	16	20	18	18	18	18



Forecast Table



PredictWind.com

WHEN ACCURACY MATTERS

Day		Mon 01																							
Local Time		00	01	02	03	04	05	06	07	08	09	10	11	12	13	14	15	16	17	18	19	20	21	22	23
Speed (Knots)	PWG	13	14	15	15	16	17	18	19	16	16	16	16	17	16	15	14	15	15	15	15	15	14	12	12
	PWC	16	17	18	20	20	18	14	17	16	15	14	14	14	16	16	17	17	17	17	16	15	15	15	15
Speed (at 40m) (40m Knots)	PWG	15	16	16	17	18	19	20	21	18	18	18	18	19	18	17	17	17	18	17	17	17	16	15	14
	PWC	17	19	21	22	22	20	16	19	18	17	16	15	16	18	19	19	19	19	19	18	17	17	17	16
Gust (Knots)	PWG	20	21	23	23	25	25	26	25	23	23	23	24	26	26	26	26	26	27	26	24	24	23	20	18
	PWC	23	26	27	27	28	26	23	24	23	22	21	22	23	25	26	27	28	29	29	27	27	26	25	23
Direction (Magnetic)	PWG	250	250	250	250	250	250	250	250	260	260	260	250	250	240	240	240	240	240	250	260	260	250	250	250
	PWC	250	250	250	250	250	250	280	270	260	260	260	260	250	250	250	250	250	250	250	260	260	260	260	260
Wave Height (m)	PWG	0.8	0.9	1	1.1	1.2	1.2	1.3	1.3	1.3	1.3	1.3	1.3	1.3	1.3	1.3	1.4	1.4	1.4	1.4	1.3	1.3	1.3	1.2	
	PWC	0.8	0.8	0.9	1	1.1	1.2	1.2	1.2	1.3	1.3	1.3	1.3	1.3	1.3	1.3	1.3	1.3	1.3	1.3	1.3	1.3	1.3	1.3	
Period (s)	PWG	3	4	4	4	4	4	4	4	5	5	5	5	5	5	5	5	5	5	5	5	5	5	5	
	PWC	3	3	4	4	4	4	4	4	4	4	4	4	5	5	5	5	5	5	5	5	5	5	5	
Wave Direction (Magnetic)	PWG	270	270	270	270	270	280	280	280	280	280	280	280	280	280	280	280	280	280	280	280	280	280	280	
	PWC	270	280	280	280	280	280	280	280	280	280	280	280	280	290	280	280	280	280	280	280	280	280	280	
Temp (Celsius)	PWG	14	14	14	14	14	14	14	14	14	14	14	14	15	15	15	15	15	15	15	15	14	15	15	
	PWC	14	14	14	14	14	14	14	14	14	14	14	15	15	15	15	15	14	14	14	14	14	14	15	
Rainfall (inches/hr)	PWG						0.01			0.01															
	PWC						0.01	0.01																	
Cloud (Cover %)	PWG	100	100	100	100	100	100	100	100	100	80	90	80	50	30		20	20	20	20	50	60	40	20	20
	PWC	100	100	90	70	100	100	100	90	70	70	70	40	20			20	70	90	100	100	100	90	40	20



WeatherBug® is Earth Networks' family of applications, used by millions of consumers and businesses to safely manage their lives and efficiently run their businesses.

Millions rely on WeatherBug for the best forecasts, the fastest alerts and more.

WeatherBug is Earth Networks' family of applications, used by millions of consumers and businesses to safely manage their lives and efficiently run their businesses.

FOLLOW US



📍 **Address:** 12410 Milestone Center Dr,
Suite 300 Germantown, MD 20876

📞 **Phone:** 301-250-4000

📞 **Toll Free:** 800-544-4429

WeatherBug's Unique Capabilities



Race Management

- Weather
 - Computer Applications

Squid 8.1.0 - andersonreggio@yahoo.com - Free

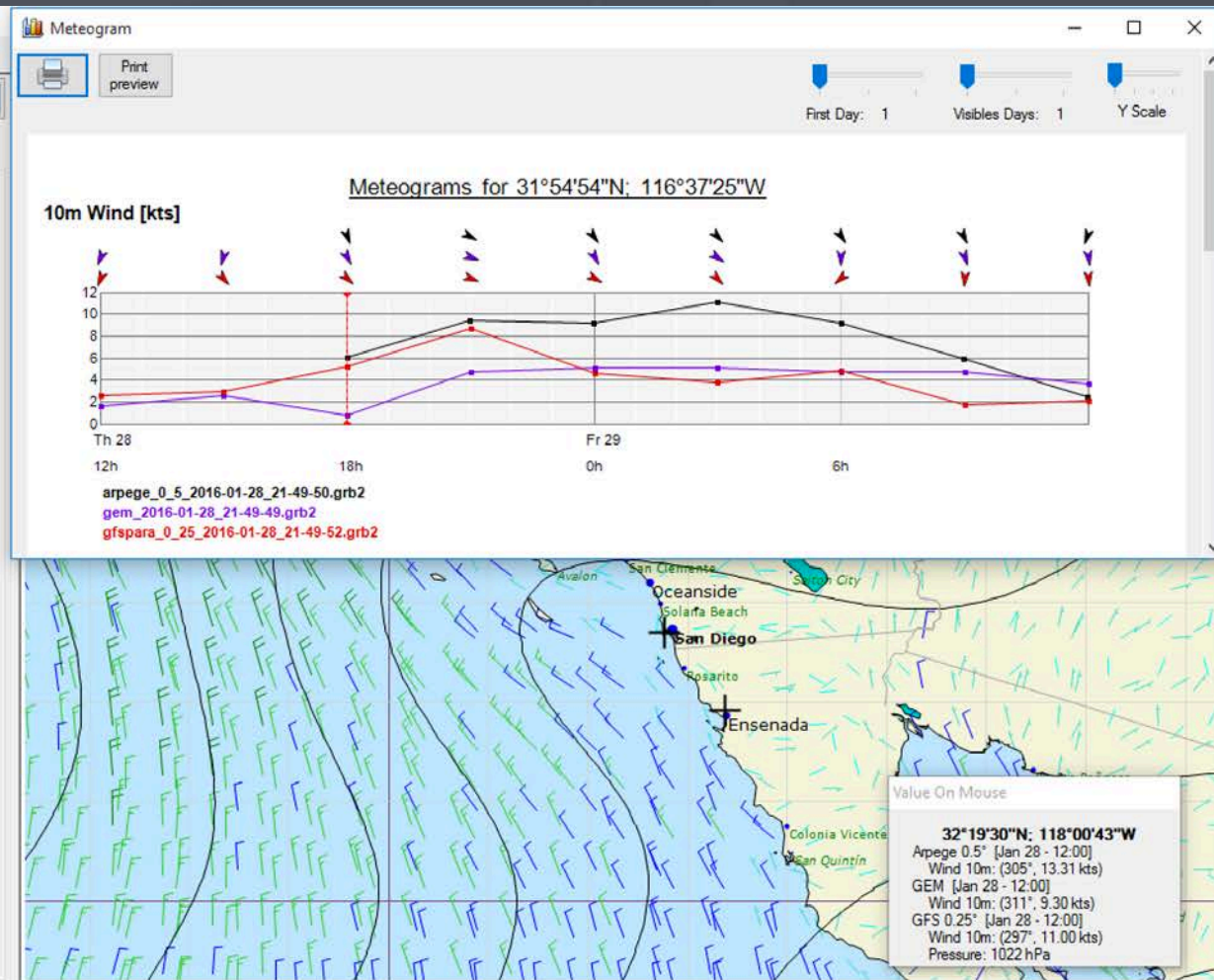
File Weather Routing Route Config Tools Help

Results

☒ Wind at 10m
☒ 10m barb (arpege_0_5_2016-01-28_21-49-50.grb2)
☒ 10m barb (gem_2016-01-28_21-49-49.grb2)
☒ 10m barb (gfspara_0_25_2016-01-28_21-49-52.grb2)
☐ 10m Streamlines (arpege_0_5_2016-01-28_21-49-50.grb2)
☐ 10m Streamlines (gem_2016-01-28_21-49-49.grb2)
☐ 10m Streamlines (gfspara_0_25_2016-01-28_21-49-52.grb2)
☐ 10m wind color gradient (arpege_0_5_2016-01-28_21-49-50.grb2)
☐ 10m wind color gradient (gem_2016-01-28_21-49-49.grb2)
☐ 10m wind color gradient (gfspara_0_25_2016-01-28_21-49-52.grb2)
☒ Mean sea level pressure
☐ Isobar (arpege_0_5_2016-01-28_21-49-50.grb2)
☒ Isobar (gfspara_0_25_2016-01-28_21-49-52.grb2)
☐ Pressure color gradient (arpege_0_5_2016-01-28_21-49-50.grb2)
☐ Pressure color gradient (gfspara_0_25_2016-01-28_21-49-52.grb2)



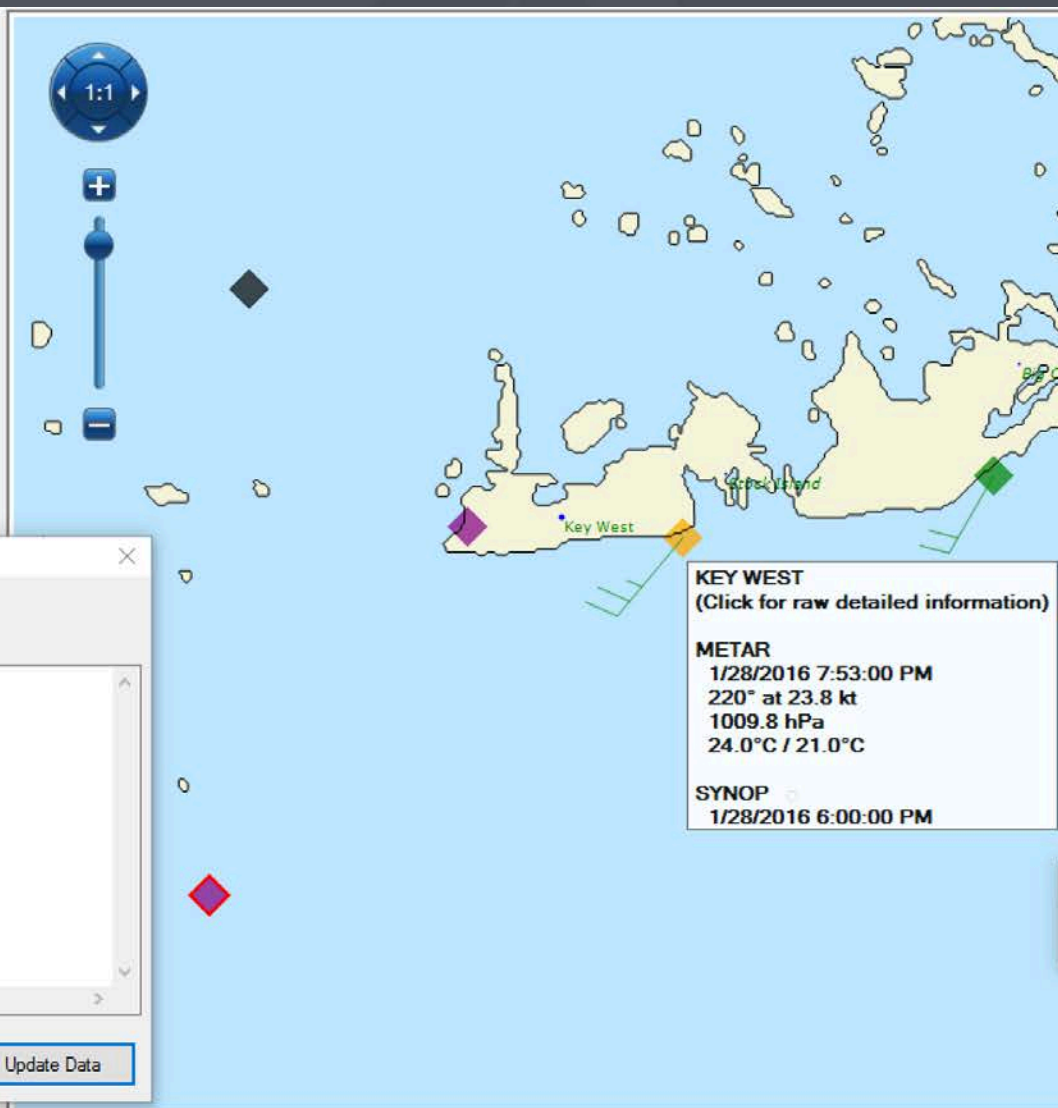
☒ Var/Source ☐ Source/Var



Results



Buoy	12
Metar	29
Synop	0
Synop+Metar	3
No data available	12
Data not downloaded	94
Total	150



Weather Station Viewer

Sand Key, FL

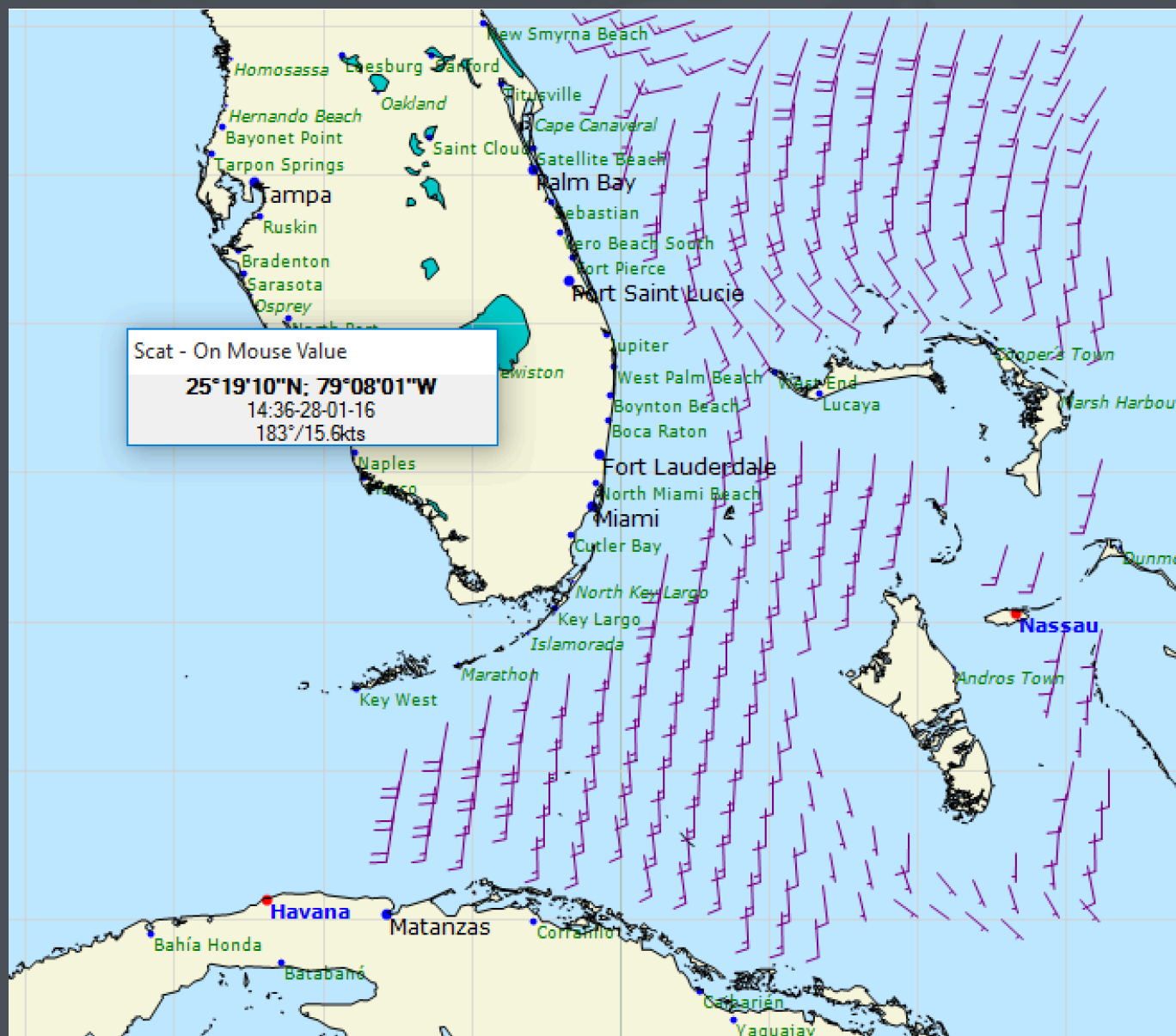
Buoy (1/28/2016 7:50:00 PM)

```

station sanfl
24? 27.4' n 81? 52.6' w

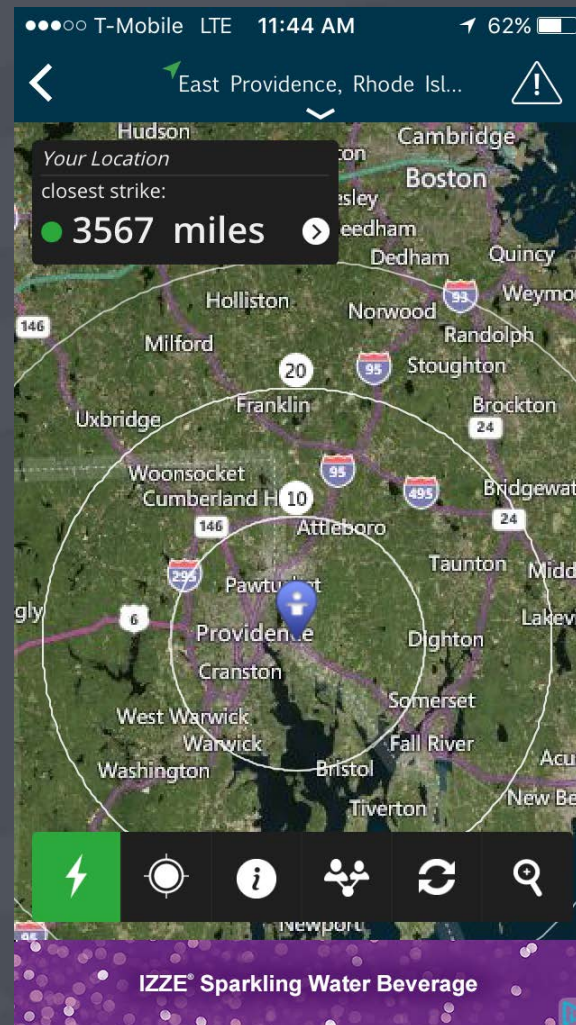
2:50 pm est
1950 gmt 01/28/16
wind: sw (220?), 31 kt
gust: 36 kt
pres: 29.83 falling
air temp: 75.4 ?f
dew point: 68.7 ?f
  
```

Update Data



Race Management

- Weather
 - Smartphone and mobile applications







WU WEATHER
UNDERGROUND



NOAA Buoy



Nearby
Buoys



Favorite
Buoys



Find
Buoys



Tide
Stations



Favorite
Tide
Stations



Moon
Phases



Settings



About

Nearby

NWPR1

Map

January 28, 2016 3:48 pm
EST



Location: 41.504N 71.326W or
0 nautical miles NW of search
location of 41.5N 71.32W.

Wind Direction: S (180°)

Wind Speed: 8 knots

Wind Gust: 10 knots

Atmospheric Pressure: 29.82
in (1009.9 mb)

Air Temperature: 40°F (4.3°C)

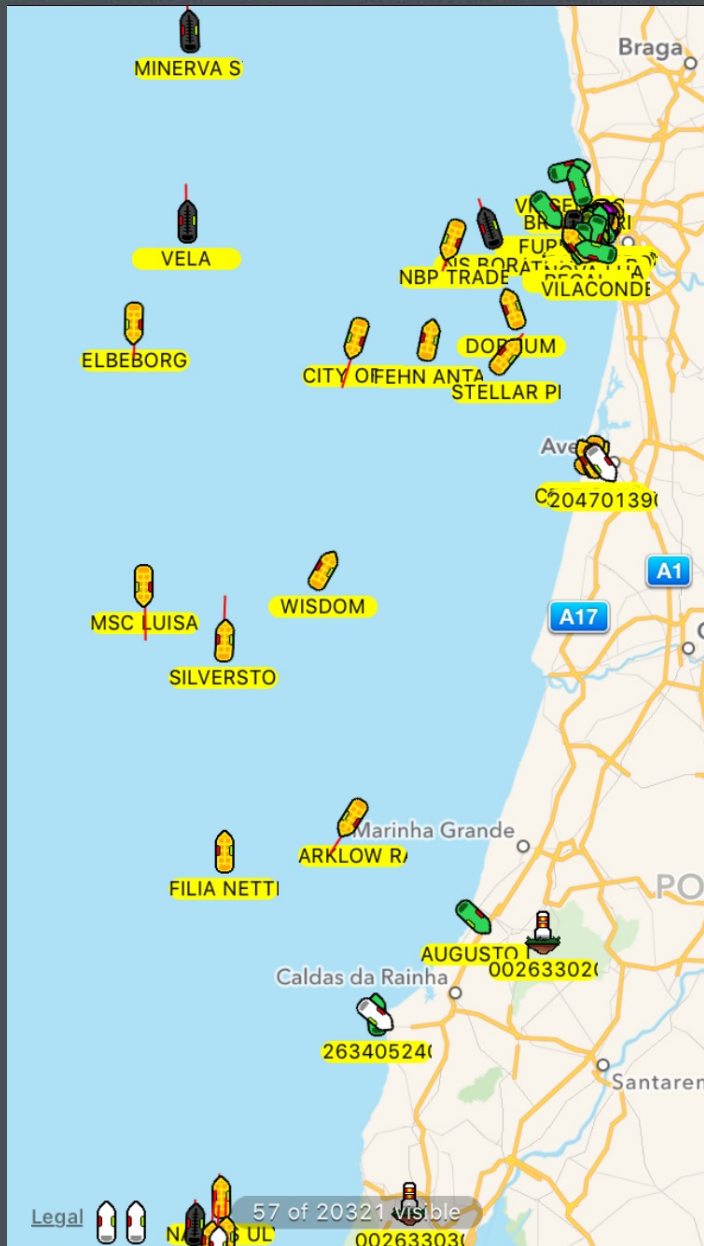
Water Temperature: 40°F
(4.7°C)



Fav:


ON





Verizon 16:18 23%

Close JANE A BOUCH... ☆



United States of America

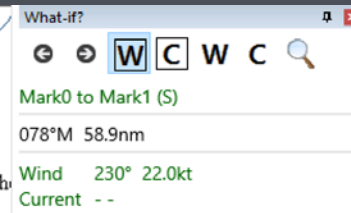
IMO:	9269702	MMSI:	366897920
Callsign:	WDB4391	Type:	Towing
Course:	70°	Speed:	12 mph / 11 kts
Destination:	HVN		
ETA:	Jan28 23:59		
Last Update:	Jan 28, 2016, 16:17:07		
Length:	535 ft	Width:	82 ft
Draft:	20 ft		
Status:	Underway		
Location:	41.029700,-73.309500		

Race Management

- Entry
- Weather
- Course management
 - Virtual Mark
- Tracking
- Scoring



Navigation and yacht racing solutions



	P	S
Heading		078
Two		152
Time		3h 50m
Distance		58.88
Awa		112
Aws		11.0

SAILING LEADERSHIP
FORUM 2016 

Race Management

- Entry
- Weather
- Course management
 - Virtual Mark
- Tracking
- Scoring



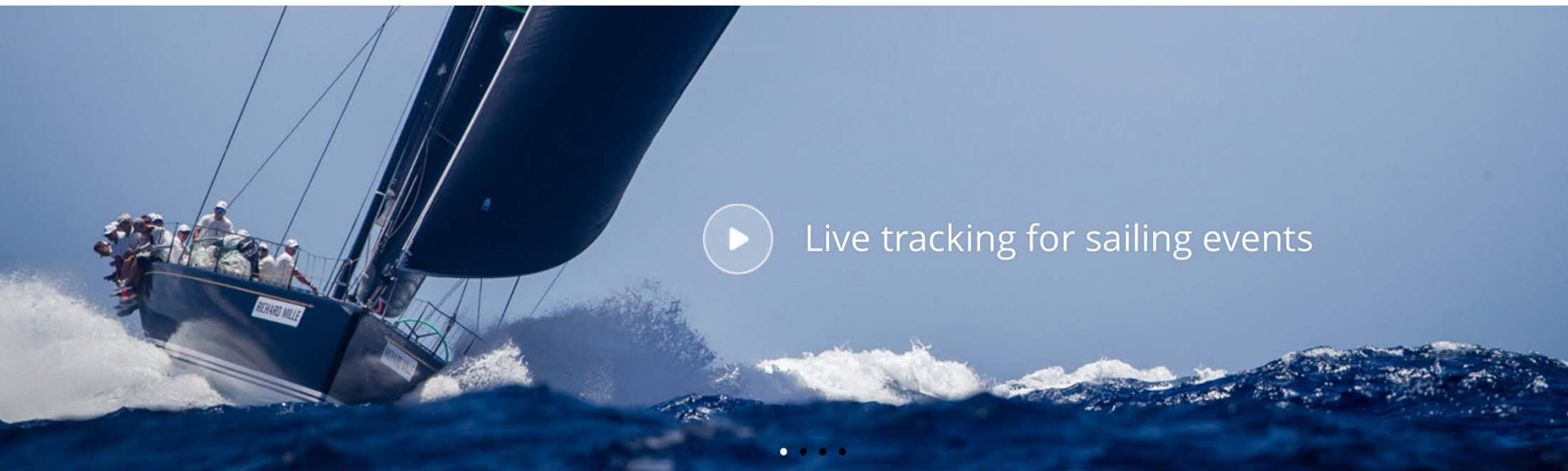
Leaders in live tracking of sports



[EVENTS](#)

[CLUBS](#)

[ABOUT](#)



Live tracking for sailing events

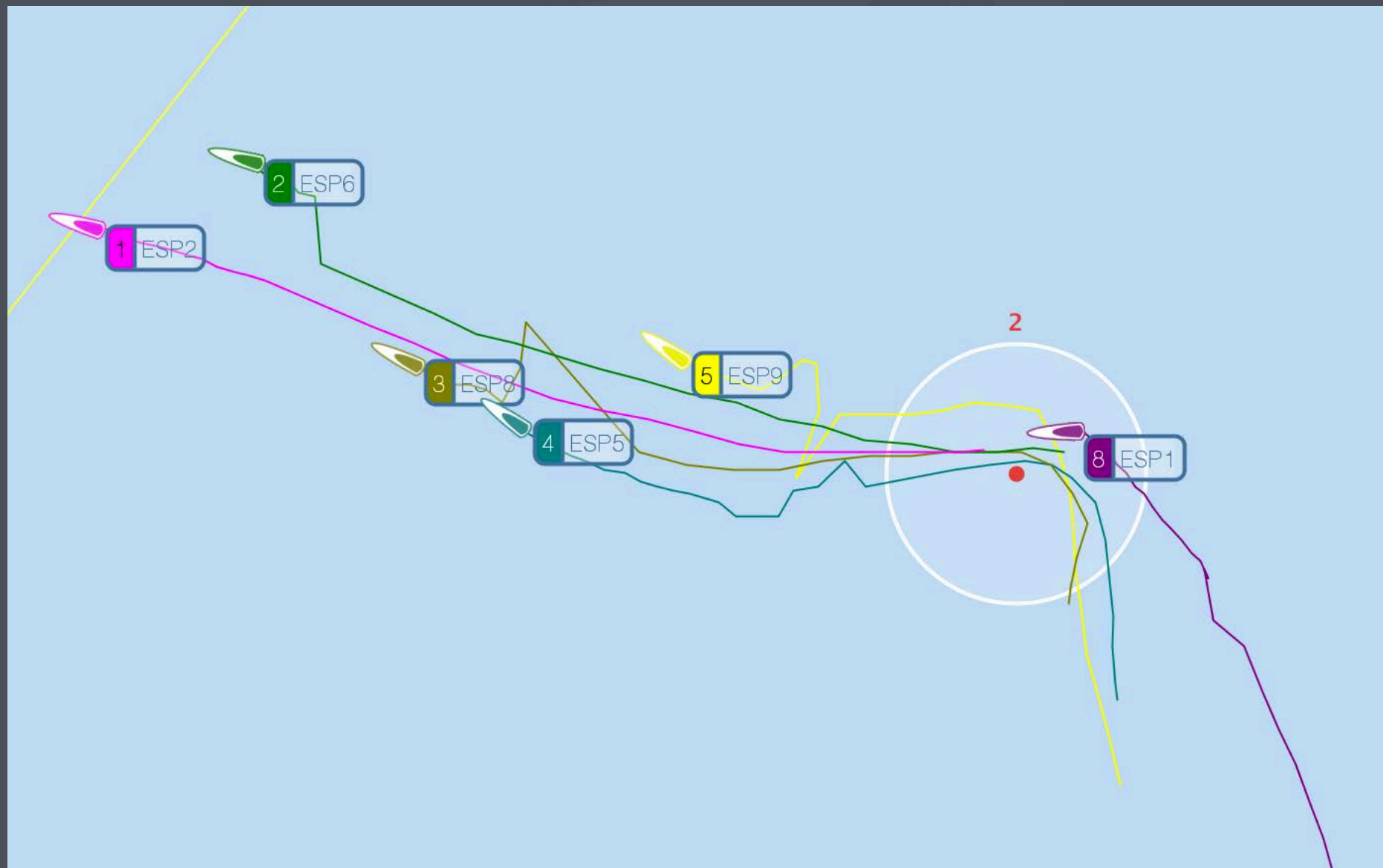


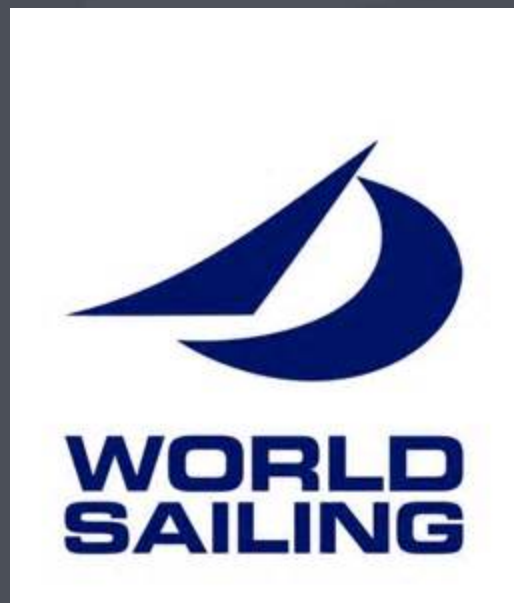
GET
TRACTRAC EVENT



GET
TRACTRAC CLUB







Tracking in 2D and 3D from the 2016 Sailing World Cup Miami will commence on Monday 30 January - below to open the player.

[here for the Competition Status Screen.](#)

[here to view mark roundings on your mobile](#)

ing from previous Sailing World Cup regattas is available to view in their entirety below.

est results it is recommended to use Firefox or Chrome

le

Tracking via the Sailviewer-3D Tablet App will be available for devices with 7" or greater screens.

DATE

07-Dec-2015

23-Jan-2016

25-Apr-2016

06-Jun-2016

12-Sep-2016

FULL REGAT

SEARCH REC

Available on the



W



470

Race 02

Men - Foxtrot - 12

Race is running for 00:16

SSE 5.0kts

S

1

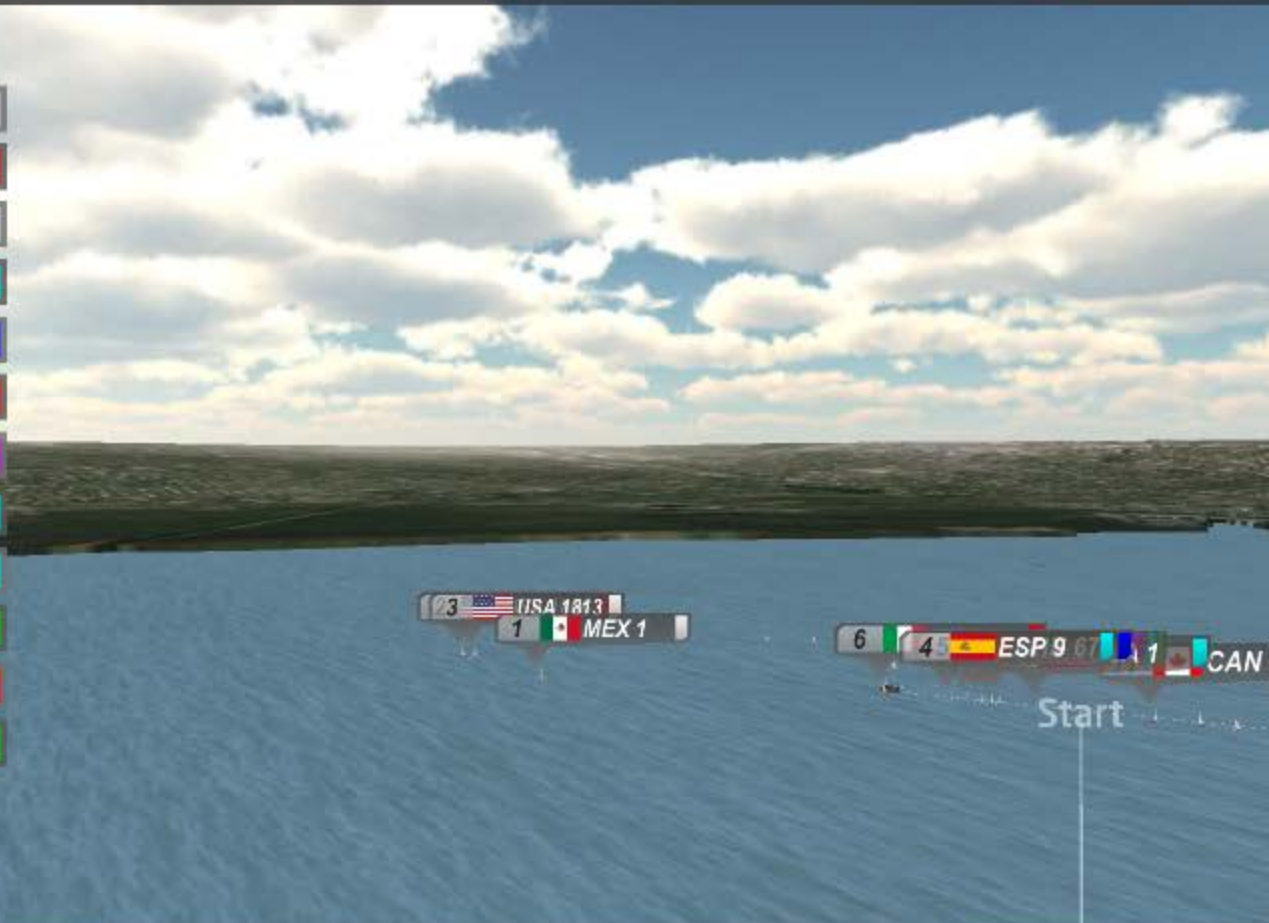
2

3

4

5

1	 MEX 1	
2	 USA 1806	+39m
3	 USA 1813	+43m
4	 ESP 9	+68m
5	 CHN 67	+73m
6	 ITA 2	+73m
7	 GRE 1	+74m
8	 USA 1	+74m
9	 BEL 16	+75m
10	 AUT 437	+77m
11	 CAN 6	+77m
12	 ECU 11	+79m



SAILING LEADERSHIP
FORUM 2016 

[HOME](#)[PRODUCTS ▾](#)[EVENT RENTAL ▾](#)[BLOG](#)[CUSTOM PRINTS](#)[SHOP](#)[SUPPORT](#)

CONNECTED

WHEREVER YOU ARE

Our products allow you to track and communicate with those you care about, via satellite from anywhere on Earth



Great Mapping

All our devices are provided with your own embeddable & customisable web page, using Google Maps



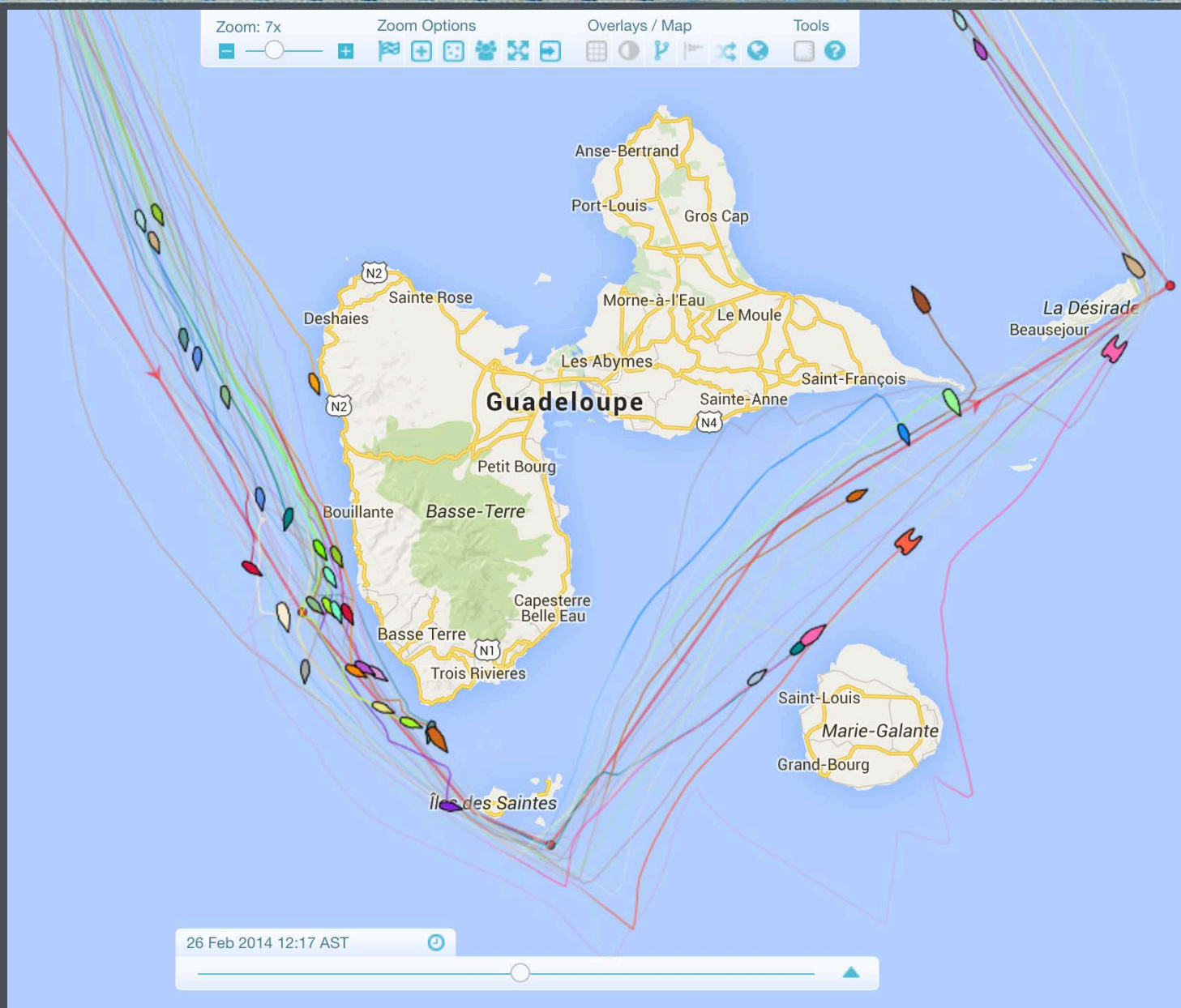
Full Support

We have real people to help you, should you need it - no call centres, just friendly & knowledgeable staff.

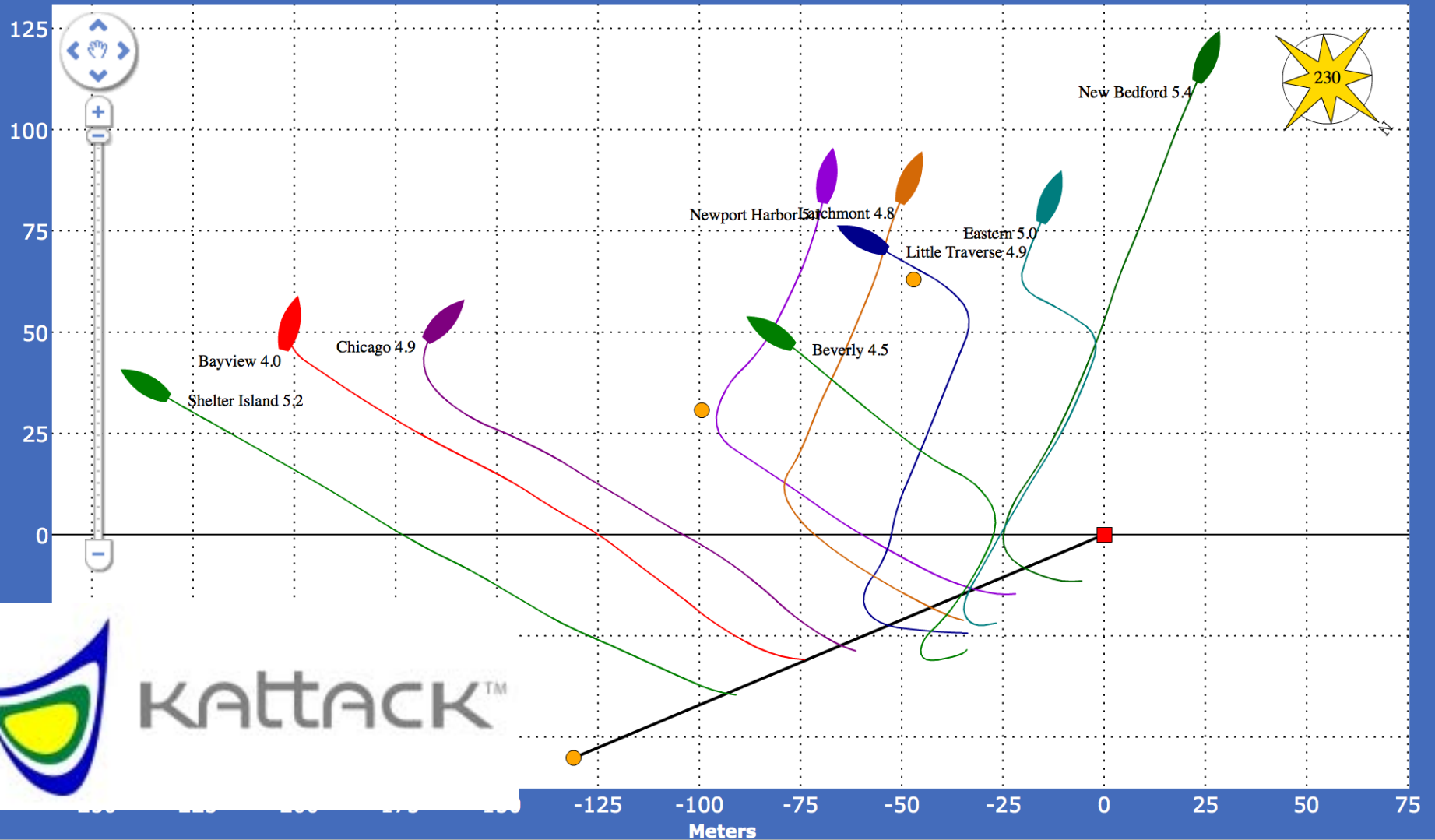


Global Coverage

Lots of people claim to cover the globe, but Iridium is the only satellite network that does. Pole to Pole.



2014 New York Yacht Club All USQS 2014 Gold Fleet Race 11





HOW IT WORKS

PODCAST

HELP

LOG IN

SIGN UP

EVALUATE AND IMPROVE YOUR SAILING PERFORMANCE



Relive your sailing adventures with raceQs' free, 3D, animated race replays. Record one boat or an entire fleet and watch the replay to evaluate your performance in 3D. You don't need any special equipment to get started, just a GPS or a smart phone. Give it a test drive today and change the way you race.

FLEET RACE REPLAY
FREE FOR EVERYONE

PUBLIC REGATTA BROADCAST
FREE FOR RACE ORGANIZERS



RACE TO WIN SAILBOAT RACING VIDEO PODCAST WATCH AND LEARN

Explore our wildly successful video podcast series to get advanced racing tips from professional sailors, develop an understanding of sail trim, starting techniques, and more.

« 40 – Finding the Bottom

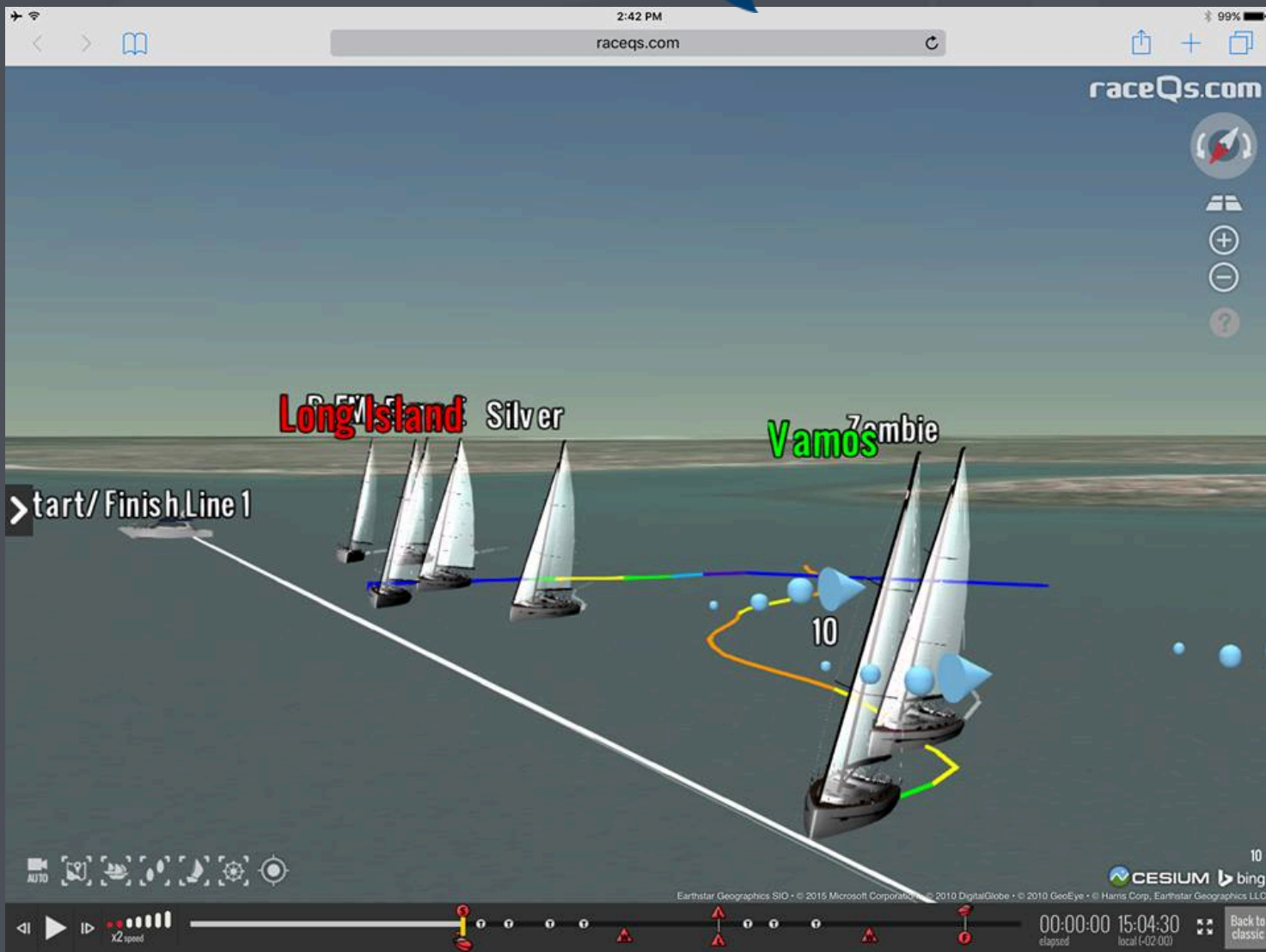
SIGNATURE RACES

Watch one of our signature races to test drive a race replay.



MOTH WORLDS 2015

Sorrento, Australia



Unknown Regatta

May 27, 2015

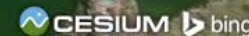
raceQs.com



 Feedback



Earthstar Geographics SIO • © 2016 Microsoft Corporation • Image courtesy of USGS • © Harris Corp, Earthstar Geographics LLC



00:00:09 17:54:41
elapsed local (-04:00)



Back to classic



Search



✓	Competitor	Name	R2	Σ
<input checked="" type="checkbox"/>	1010	American Prayer	1	2
<input type="checkbox"/>	1152	Le Tigre	2	6
<input checked="" type="checkbox"/>	298	Warrior	3	6
<input type="checkbox"/>	487	Aegir	4	9
<input type="checkbox"/>	702	Cavitica	5	12
<input type="checkbox"/>	146	Pearly Baker		2
<input type="checkbox"/>	176	Four Spacious Guys		6
<input type="checkbox"/>	406	Next Adventure		8

SAP

Race R2

Beverly Yacht Club Twilight J80s
Thu 13/8/2015

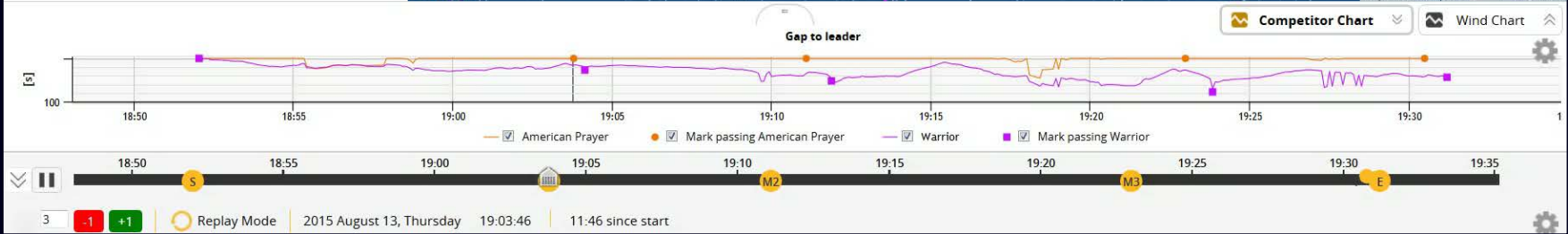
14.0 kts

129.9

Leaderboard



Map data ©2016 | 20 m | Terms of Use





Sponsor , Media and Spectator

- Communications
- Tracking
- Live commentary and video

Personal Technology

- Anemometers
- GPS
- Range Finders
- Device Mounting
- Drones

Anemometers



GPS





<https://youtu.be/Td2CY4hzW8A>

GARMIN

Range Finders



Device Mounting



Drones



Drones



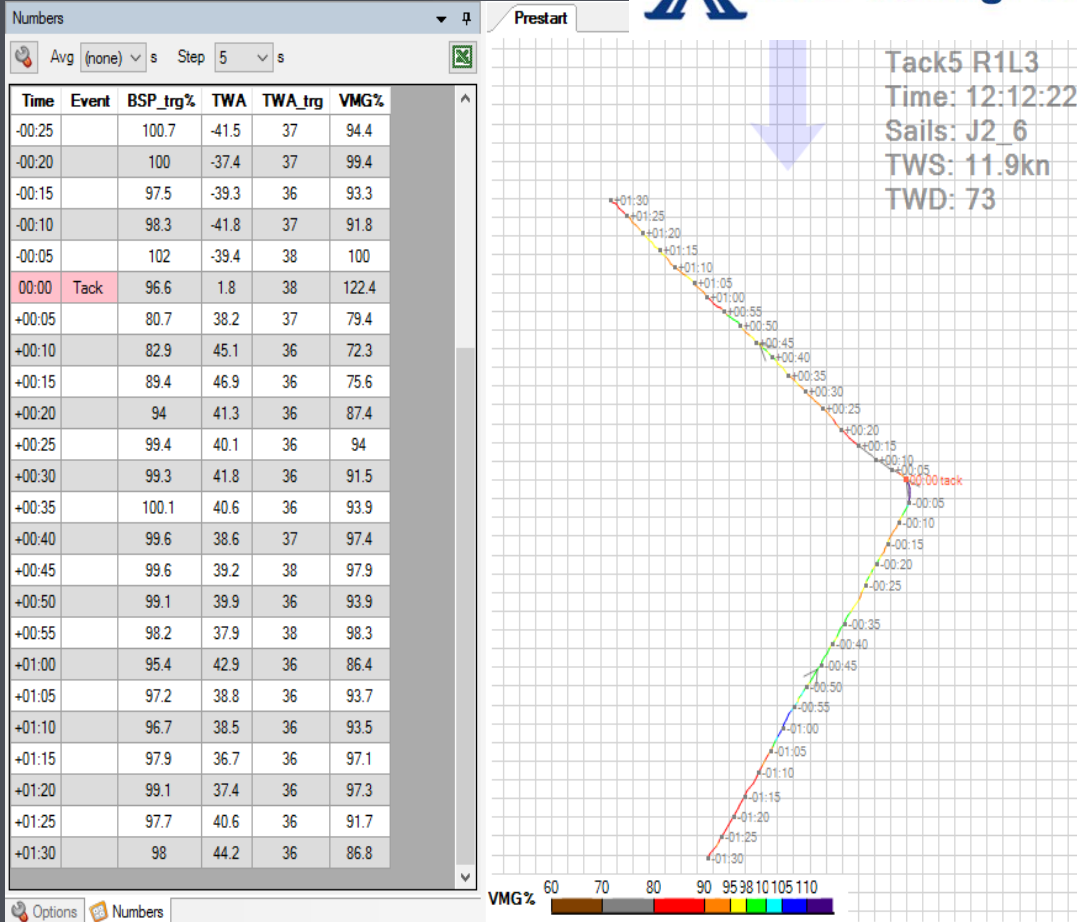
What The Future Holds

- Data Logging and Analysis
- Dynamic Positioning
- Immediate Adjudication

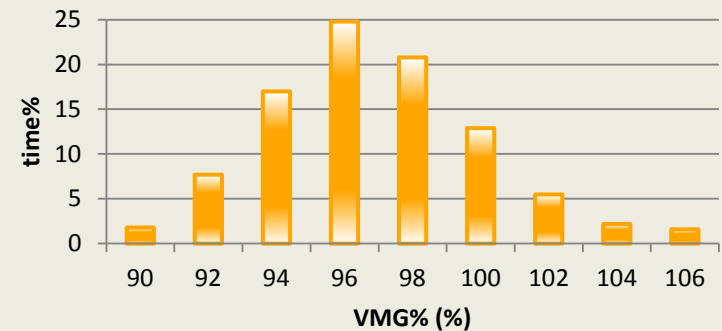
Data Logging and Analysis



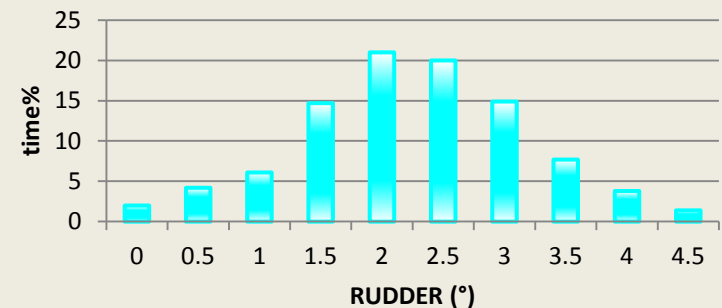
KND-SailingPerformance



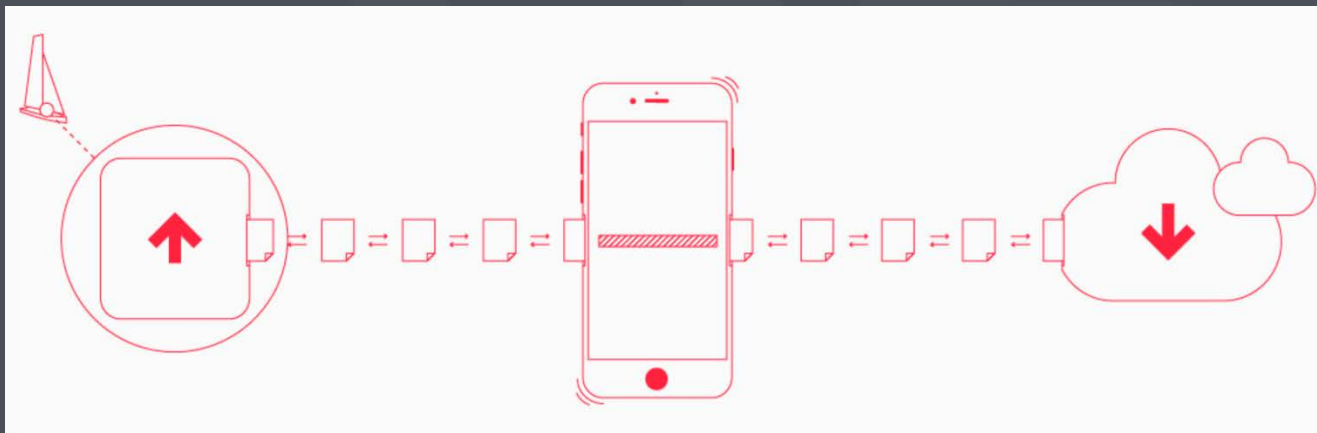
VMG% distribution



RUDDER distribution



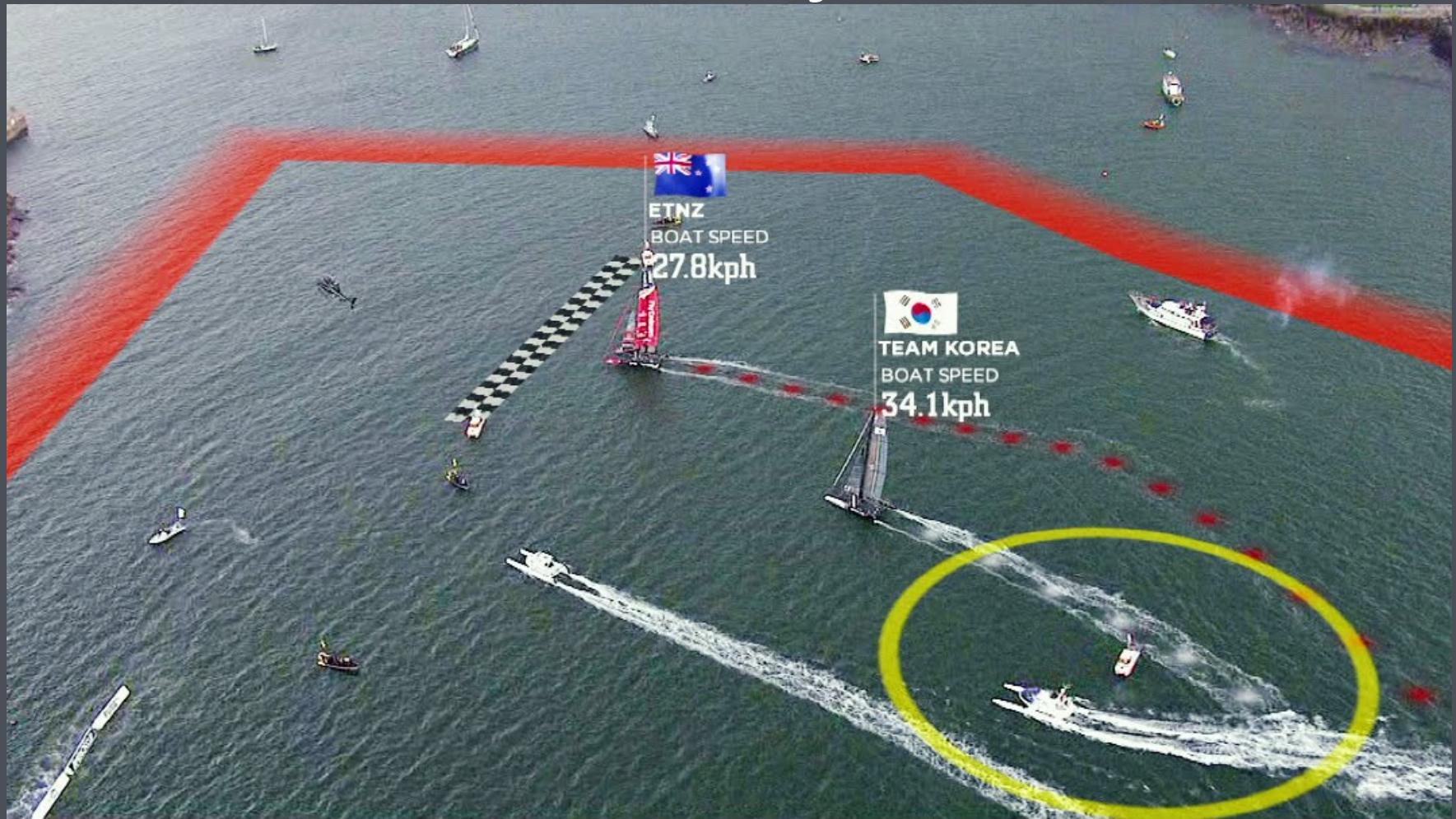
Data Logging and Analysis



Dynamic Positioning



Immediate Adjudication



- Anderson Reggio
andersonreggio@gmail.com
- Ron Hopkins
rhopkins@challengeusa.net

Yachtscoring: www.yachtscoring.com
Regatta Network: www.regattanetwork.com
Regatta Toolbox: www.regattatoolbox.com
Sailflow: www.sailflow.com
iWindSurf: www.iwindsurf.com
Windfinder: www.windfinder.com
PredictWind: www.predictwind.com
EarthNetwork: www.earthnetwork.com
Squid: www.squid-sailing.com
Garmin: www.garmin.com
Expedition: www.expeditionmarine.com
SAP: <http://go.sap.com/index.html>
TracTrac: <http://www.tractrac.com/web/>
YB Tracking: www.ybtracking.com
KND Sailing Performance: www.sailingperformance.com
Anemomind: www.anemomind.com

Your Opinion Matters

Please open the **Sailing Leadership Forum app** and complete the **session survey** found in the **menu bar**.

Thank you for attending this session