



**THE  
BURGEE  
PROGRAM**

By **GowrieGroup**

# Safety Hazards & Sailing Programs

February 2016

**Presented by:**

Kellie Crete, Safety & Loss Prevention Gowrie Group

Whitney Peterson, VP Marketing Gowrie Group



# Agenda

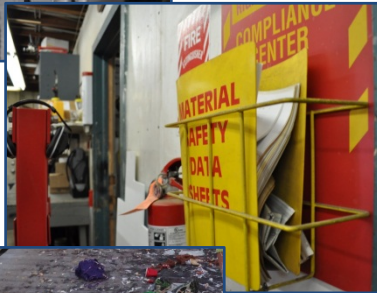
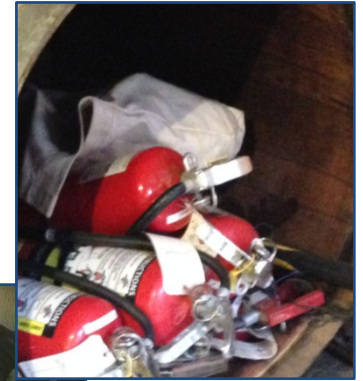
---

- 1. Areas of Safety Concerns**
- 2. Sailing Program Safety Materials & Tools**
- 3. What to do Next**
- 4. Questions**



# Virtual Safety Field Trip

---





# Docks & Grounds

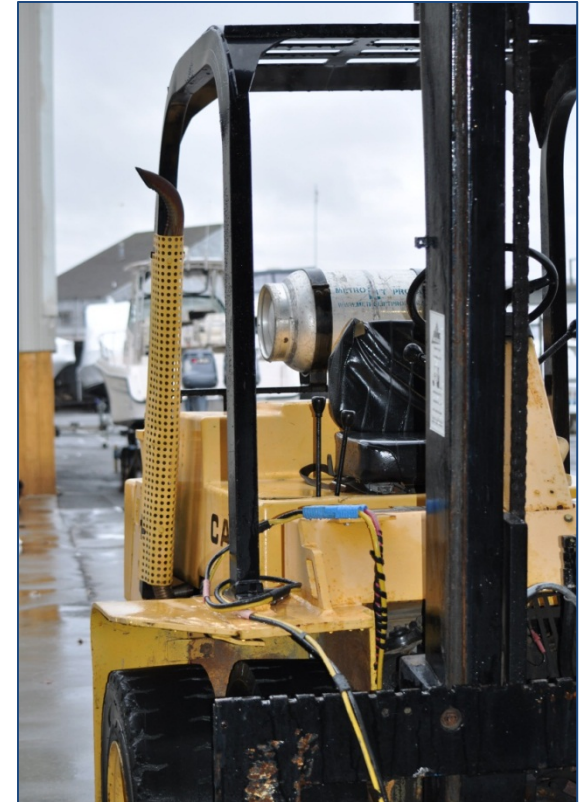
---



Download our [Dock Safety](#) report

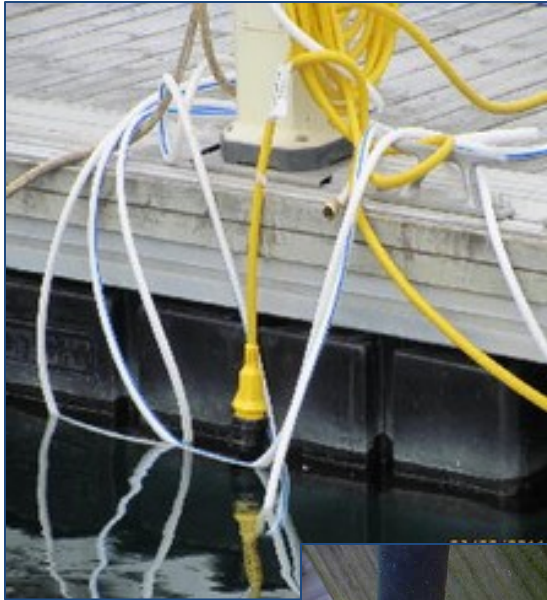


# Cranes, Hoists, & Heavy Equipment





# Electric Shock Drowning Risks



## "NO SWIMMING" Around AC Powered Docks:

- Electric Shock Drowning Prevention Association recommends **swimming be prohibited** around boats, docks, and marinas that use AC electrical power.
- **Signs about the risks should** be posted to warn people of the dangers associated with swimming around any equipment powered by AC electricity.



Download our [ESD Safety](#) report



# Propane & Flammables (1)

---





# Propane & Flammables (2)

---



Download our [Propane Storage safety](#) report



# Data Sheets & Storage Containers





# Personal Protective Equipment (PPE): Respirators

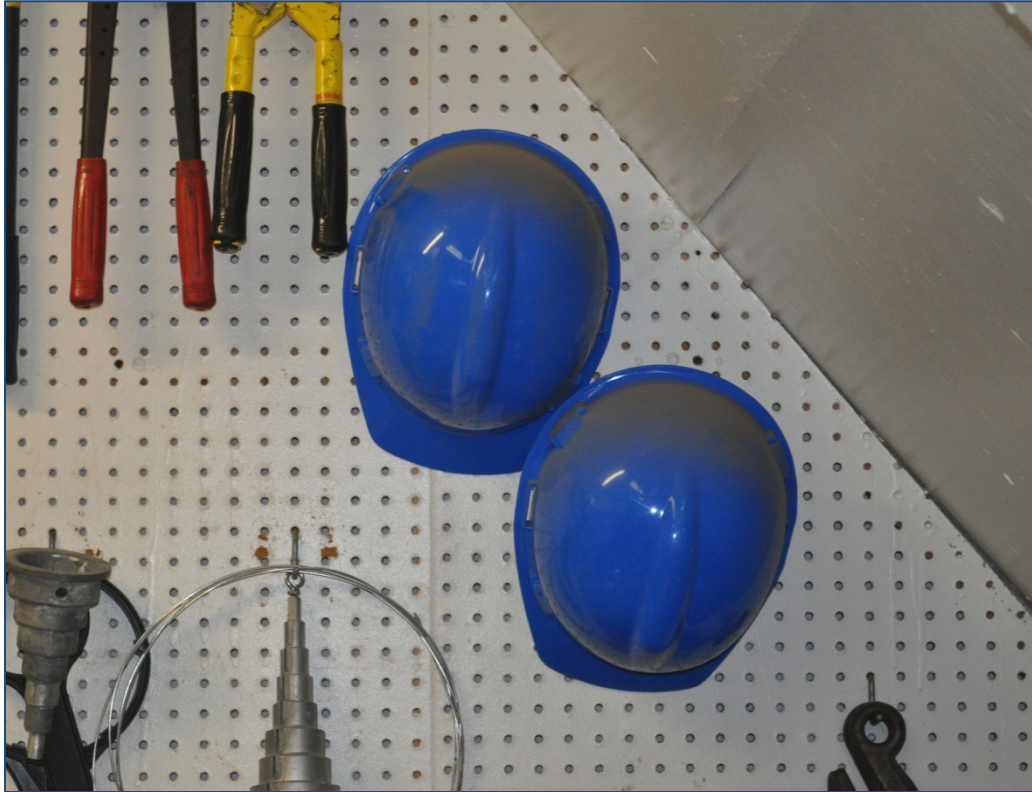
---





# Personal Protective Equipment (PPE): Hard Hats & Safety Glasses

---





# Materials Storage: Compressed Gas & Corrosives





# Materials Storage: Flammable Storage Cabinets



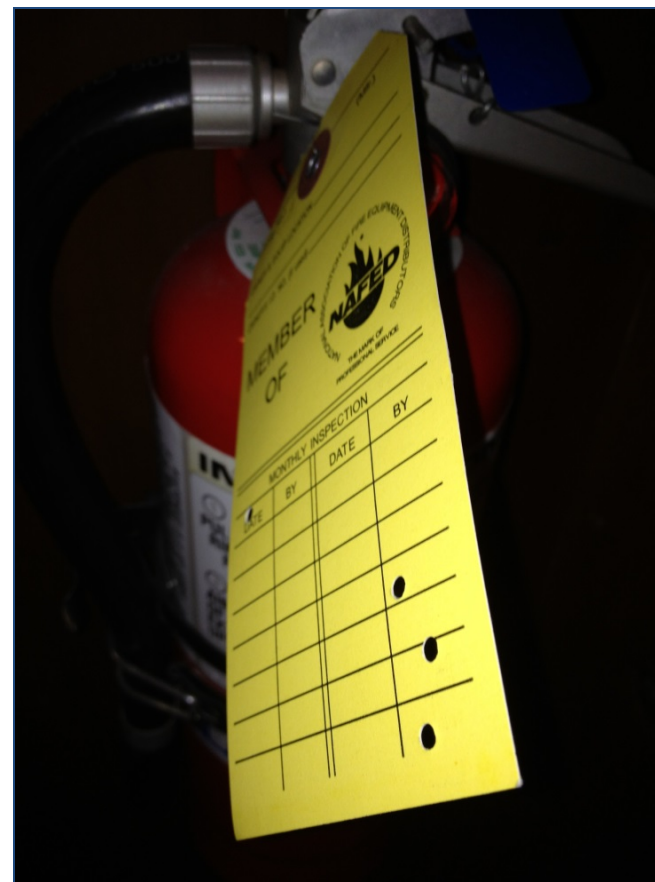


# Materials Storage: Commingling





# Fire Extinguishers (1)





# Fire Extinguishers (2)



Download our [Fire Extinguishers Safety](#) report



# Exits & Exit Signs

---





# Automated External Defibrillators (AED)

---





# Electrical Cords

---



Download our [Electrical Cords Safety](#) report



# Electrical Panels & Fans

---





# Overhead Storage

---





# Power Tools





# Ladders

---



Download our [Ladder Safety](#) report



# Environmental Hazards





# Safety Check Lists: Weekly & Self Evaluation

**The BURGEE PROGRAM**  
By Gowrie Group

**Burgree Program: Weekly Safety Check List**

Inspected by: \_\_\_\_\_ Date: \_\_\_\_\_

	YES	NO	CLEAN	CHECK
<b>1. EXTENSION CORDS:</b>				
No cuts or bare wire				
Ground pins in place				
No trip hazards				
No cords going through/over doorways				
<b>2. ELECTRICAL PANEL:</b>				
Accessible				
Doors working				
No missing breakers				
<b>3. FIRE EXTINGUISHERS:</b>				
Accessible				
Charged				
Signs in place				
<b>4. SAFETY GLASSES:</b>				
In use as needed				
Goggles or face shields in designated areas				
<b>5. EXITS:</b>				
Clear				
Signs in place				
<b>6. HAZARDOUS AREAS:</b>				
Properly labeled				
Stored in proper area				
<b>7. SAFETY SIGNS:</b>				
In proper locations?				
<b>8. EYE WASH STATIONS:</b>				
Accessible				
Containers full and sealed				
<b>9. HOUSEKEEPING:</b>				
Barrels empty				
Rags in proper container				
<b>10. POWER TOOLS:</b>				
Adjusted properly				
Grounded				
Good working order				
<b>11. FLAMMABLE STORAGE CABINET:</b>				
Nothing stored on top				
Doors completely shut				
All materials properly labeled and sealed				
<b>12. FLAMMABLES IN FLAMMABLE STORAGE CABINET</b>				
<b>13. RESPIRATORS CLEANED?</b>				

COMMENTS: \_\_\_\_\_

Club Manager Signature: \_\_\_\_\_ Date: \_\_\_\_\_

Gowrie Group | Burgree Program Safety | [Kellie@gowrie.com](mailto:Kellie@gowrie.com) | 508.509.3768



**Self Evaluation Checklist for Yacht Clubs and Sailing Organizations**

Brought to you by **THE BURGEE PROGRAM**  
By Gowrie Group

Training Facilities	Yes	No	N/A*	Students	Yes	No	N/A*
<b>Launch Areas:</b>				• Swimming ability documented			
• Launching and storage areas clear of overhead power lines				• Age & weight limits for each class of boat			
• Launch ramps				• Maximum and minimum class size established			
• Solid construction				• Medical records for each student: Highlighted potentially hazardous medical conditions			
• Good traction of walking surfaces				• Discipline protocol established for younger students			
• Adequate maneuvering room				• Proper application signed by parent or guardian			
• Electric hoist restricted to staff operation				• Specific criteria for drop-off and pickup of students			
• Safe and adequate access to boats							
• Predetermined method of responding to forecast of adverse weather				<b>Operations:</b>			
• Method of alerting students/instructors of impending bad weather				• Pre and post sail safety check of all equipment			
• First-Aid kits				• Sufficient spare parts on hand for quick minor repair			
• Appropriately stocked				• Pre and post season checking:			
• Readily available				All boat rigging test sailed by proficient sailor			
• On board rescue boats				Draglines capsize to test buoyancy			
				*N/A Not applicable			
<b>Instructors:</b>							
• US SAILING certified for proper level of student							
• Certified in CPR and First Aid							
• Always wear PFD's on and near water							
<b>Training Fleet:</b>							
• Adequate for task and area conditions							
• Keelboats							
• Self righting							
• Self hauling							
• Range of positive stability appropriate for conditions in which they will be used							
• Onboard Boats							
• Self rescuing							
• Modified to prevent hurling							
<b>Boat Maintenance:</b>							
• Routine maintenance program in place							
• Procedure for recording repairs							
• Adequate safety equipment on each boat							
• Adequate requirements for proper cleanup and equipment storage							
<b>Safety Boats:</b>							
• Rigged & available with operator when sail craft underway							
• Engine in excellent condition							
• Sufficient power to plane at 20 knots							
• Rigged to tow disabled sail craft							
• Towing bit and tackle on board							
• Adequate tools, safety & first aid on board							
• Capable of rescuing & returning all students							

**THE BURGEE PROGRAM**  
By Gowrie Group

[www.burgreeprogram.com](http://www.burgreeprogram.com)  
800.262.8911 | [burgree@gowrie.com](mailto:burgree@gowrie.com)  
70 Essex Road Westbrook, CT 06498

The Burgree Program is managed by Gowrie Group, underwritten by Chubb Group, and endorsed by US SAILING.

Download our [Weekly Safety List template](#)



# Document and Practice your Emergency Response Plan



## Sachems Head Yacht Club: Emergency Card

61 Chimney Corner Circle, Guilford CT, p: 203-453-9207

### Emergency or Life Threatening Injury - Steps

- Render assistance
- Make contact with back-up help
- **Call for Help & Emergency Medical Attention:**
  1. **9-1-1** (say Guilford CT)
  2. **Guilford Police/Fire:** 203-453-8000
  3. **US Coast Guard:** VHF #16, 203-468-4401
  4. **SHYC Clubhouse:** 203-453-9207 or VHF #72
  5. **Sailing Director:** VHF #72
- Monitor and administer first-aid (AED and First Aid supplies in clubhouse ballroom)
- If possible, bring injured person ashore to a SHYC Emergency Response
- Send someone to meet/direct Emergency vehicles
- Transfer injured to care of Emergency Team
- Debrief and inform key people: SHYC Commodore, Sailing Director, family
- Complete an incident report

### Be prepared to tell 9-1-1:

- Current location of injured person
- Description of boats (if requesting on-water help)
- Where you plan to bring injured ashore (see map on back)
- Age/gender/number of injured people
- Type of injury/situation
- Your name and call back number

### SHYC Emergency Response Pick-Up Locations



	Name	Description	Address	Nearest Cross Street
A	Sachems Head Yacht Club	Enter between 2 stone pillars, between 59 & 66 Chimney Corner Circle. Walk over bridge.	61 Chimney Corner Circle, Guilford CT	Prospect Ave. and Falcon Rd.
B	Sachems Assoc. Dock/Ramp	Back of harbor. Dead End of Colonial Rd.	Between 539 and 600 Colonial Rd, Guilford CT	Uncas Point Rd.
C	Sachems Head Assoc. Pier	First right after 219 West Uncas Point Rd.	Next to 219 West Uncas Point Road, Guilford CT	Old Sachems Head Rd.

- IF IN THIMBLE ISLANDS: **Stony Creek Ferry Dock**. 4 Indian Point Rd, Branford. Stony Creek Village.
- IF NEAR FAULKNER'S OR JACOBS BEACH: **Guilford Town Marina**. End of lower Whitfield Street.

Emergency Numbers	SHYC Main Numbers
<b>911</b>	<b>Clubhouse &amp; Launch:</b> 203-453-9207, VHF #72
<b>Guilford Police/Fire:</b> 203-453-8000, 911	<b>Sailing Director:</b> Scott Leppert, 860-817-7305
<b>Guilford Town Marina:</b> VHF #16, 203-453-8092	<b>Commodore:</b> Rob Wilber, 203-627-6599
<b>US Coast Guard:</b> VHF #16, 203-468-4401	<b>Fleet Captain:</b> Peter Ginz, 203-623-7240

Ask us for the editable [template](#)



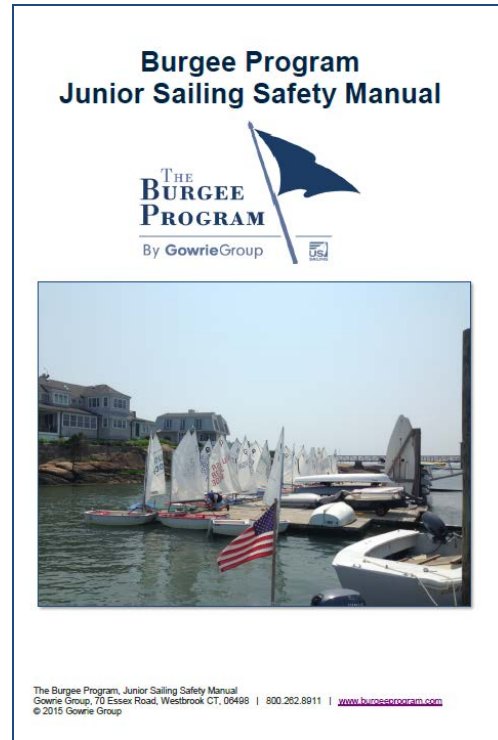
# 2015 Edition: Junior Sailing Safety Guide

## Junior Sailing Safety Manual

Helps clubs and sailing organizations develop and sustain safe and successful junior programs:

- Promote safety
- Foster a fun environment
- Teach children how to sail
- Encourage racing among those interested
- Instill a love of sailing

Ask us for the editable [template](#)



### TABLE OF CONTENTS

Junior Sailing Mission Statement	4
Junior Sailing Committee	4
Staff Certifications	5
Ratios for Students - Instructors	5
Facility & Safety Orientation	6
Powerboat Assessments	6
Walk Around Inspections	7
Recordkeeping Guidelines	8
Logs	9
Injury	9
Equipment Check & Maintenance	9
Swim Check Guidelines	10
Life Jackets	10
Footwear	10
Eye and Skin Protection	11
Students Missing Class	11
VHF Radios & Cell Phones	11
Parent Orientation	11
Regattas	12
Inclement Weather	12
Safety Boat Preparation & Operation	12
Outboard Motor Prop Guards	13
Emergency Action/Response Plans	14
Junior Program Safety Rules	15
Discipline Policy	16
Forms	17



# Top-10 in the New Junior Sailing Safety Guide

---

1. Ratio recommendations for Students : Instructors : Safety Boats
2. Walk Around Inspection Check List
3. Parent Orientation Meetings
4. Program Safety Rules
5. Discipline Policy
6. Forms: Applications, Waivers, Releases
7. Logs: Accidents, Maintenance, Radio
8. Pre/Post Checklist for Powerboats
9. Emergency Action/Response Template
10. 10 Crisis Steps

Also available on our USBs





# What should you do when you get back home?

---

- Form an **safety and risk management sub-committee**
- Involve **your board members and flag officers** in safety conversations
- Help your staff do a complete **pre-season safety self-inspection**
- Train your staff to do **weekly safety self-inspections**
- Document and practice your **Emergency Response Plan**





# A Sense of Calm: Brought to you by The Burgee Program

## THE BURGEE PROGRAM

By **GowrieGroup**



### The Burgee Program insures:

- More than 50% of sailing organizations in the US
- More than 1,000 entities in total, including clubs, schools, and community programs

### Team behind the program is best in class:

- Managed by marine experts at Gowrie Group
- Underwritten by Chubb
- Endorsed by US Sailing

### Learn more:

- [www.burgeeprogram.com](http://www.burgeeprogram.com)
- 800.262.8911